

Quick-fitting Joint for Pneumatic Piping Tube Fitting

Characteristics (Package : 10 pcs. in a bag)

- This Quick-fitting joint is used in pneumatic piping.
(Use with water is possible depending on the conditions.)
- The Tube Fitting comes in a wide variety of models to meet all your needs in pneumatic piping.
- Even after installation, the direction of the tubing can be changed freely.

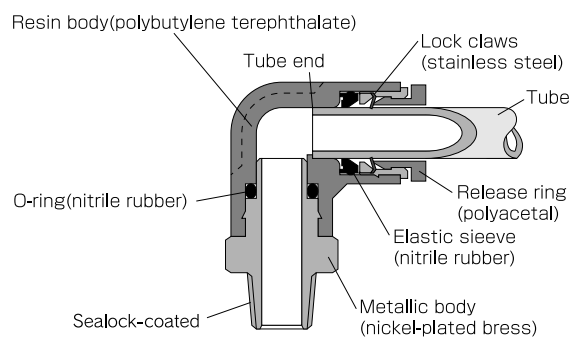
Specifications

Fluid admitted	Air, water (conditional)	
Service pressure range	0~150psi	0~0.9MPa(0~9.18kg/cm ²)
Working vacuum	-29.5in.Hg	-750mmHg
Service temperature range	32~140°F	0~60°C

※ Conditions of Water (when used)

1. Operating temperature: 0 to 60°C
2. Operating pressure: 0 to 0.32MPa
3. No water hammer is allowed.
4. Be sure to install the insert ring.

Construction



Model Designation (Example)



① Type

② Tube Dia. (φD)

	mm size						in. size						
Code	4	6	8	10	12	16	5/32	3/16	1/4	5/16	3/8	1/2	5/8
Dia.	φ4	φ6	φ8	φ10	φ12	φ16	φ5/32	φ3/16	φ1/4	φ5/16	φ3/8	φ1/2	φ5/8

③ Thread size (R)

	mm size		in. size			
Code	M5	M6	01	02	03	04
Size	M5×0.8	M6×1.0	R1/8	R1/4	R3/8	R1/2
	Unified fine thread		American standard taper pipe thread			
Code	U10U		N1U	N2U	N3U	N4U
Size	10-32UNF		NPT1/8	NPT1/4	NPT3/8	NPT1/2

④ U: Hexagon flat-to-flat inch spec. (NPT)

No code: Hexagon flat-to-flat metric spec.

Detailed Safety Instructions

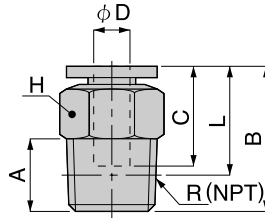
Before using the PISCO device, be sure to read the "Safety Instructions", "Common Safety Instructions for Products Listed in This Manual" on page 3 and "Common Safety Instructions for Quick-Fitting Joint" on pages 4 and 5.

Warning

1. When the fluid admitted is water, do not use the PISCO device unless the application satisfies all the conditions required in Specifications. Otherwise damage may be caused to the joint body, the tube may come off or leakage may result.

PC

Straight



Unit : inch

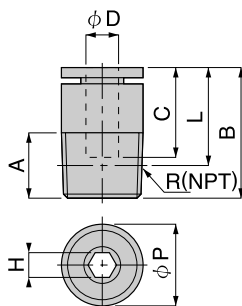
Model	Tube dia. φD(mm)	R	A	B	L	C	H	Weight (OZ)	Orifice φMM	Eff.a. mm2	CV
PC 4-M5	4	M5	0.14	0.79	0.65	0.59	0.39	0.23	1.80	1.90	0.10
PC 4-M50	4	M5	0.14	0.91	0.77	0.59	0.32	0.23	1.80	1.90	0.10
PC 4-M6	4	M6	0.18	0.85	0.65	0.59	0.39	0.23	3.00	6.20	0.34
PC 4-01	4	R1/8	0.32	0.83	0.67	0.59	0.39	0.30	3.00	5.30	0.29
PC 4-02	4	R1/4	0.43	0.83	0.59	0.59	0.55	0.56	3.00	5.30	0.29
PC 6-M5	6	M5	0.14	0.87	0.73	0.67	0.47	0.32	1.80	1.90	0.10
PC 6-M6	6	M6	0.18	0.91	0.73	0.67	0.47	0.33	3.00	6.20	0.34
PC 6-01	6	R1/8	0.32	0.89	0.73	0.67	0.47	0.32	4.60	12.50	0.68
PC 6-02	6	R1/4	0.43	0.96	0.73	0.67	0.55	0.60	4.60	12.50	0.68
PC 6-03	6	R3/8	0.47	0.92	0.67	0.67	0.70	0.95	4.60	12.50	0.68
PC 8-01	8	R1/8	0.32	1.10	0.95	0.71	0.55	0.53	6.00	20.00	1.08
PC 8-02	8	R1/4	0.43	1.04	0.81	0.71	0.55	0.53	7.00	20.00	1.08
PC 8-03	8	R3/8	0.47	0.94	0.69	0.71	0.70	0.81	7.00	20.00	1.08
PC 10-01	10	R1/8	0.32	1.20	1.04	0.79	0.70	0.79	6.00	22.90	1.24
PC 10-02	10	R1/4	0.43	1.18	0.95	0.79	0.70	0.70	8.50	35.00	1.90
PC 10-03	10	R3/8	0.47	1.16	0.91	0.79	0.70	0.92	8.50	35.00	1.90
PC 10-04	10	R1/2	0.59	1.20	0.89	0.79	0.83	1.72	8.50	35.00	1.90
PC 12-02	12	R1/4	0.43	1.42	1.18	0.93	0.83	1.51	8.50	35.00	1.90
PC 12-03	12	R3/8	0.47	1.26	1.00	0.93	0.83	1.25	11.00	59.00	3.20
PC 12-04	12	R1/2	0.59	1.34	1.02	0.93	0.83	1.74	11.00	59.00	3.20
PC 16-03	16	R3/8	0.47	1.55	1.30	0.97	0.95	2.09	11.00	83.30	4.51
PC 16-04	16	R1/2	0.59	1.63	1.32	0.97	0.95	2.36	13.00	114.00	6.18
PC 1/4-01	1/4	R1/8	0.32	0.89	0.67	0.67	0.55	0.32	4.60	12.50	0.68
PC 1/4-02	1/4	R1/4	0.43	0.96	0.67	0.67	0.55	0.60	4.60	12.50	0.68
PC 1/4-03	1/4	R3/8	0.47	0.92	0.67	0.67	0.70	0.95	4.60	12.50	0.68
PC 5/16-01	5/16	R1/8	0.32	1.10	0.95	0.71	0.55	0.53	6.00	20.00	1.08
PC 5/16-02	5/16	R1/4	0.43	1.04	0.81	0.71	0.55	0.53	7.00	20.00	1.08
PC 5/16-03	5/16	R3/8	0.47	0.94	0.69	0.71	0.70	0.81	7.00	20.00	1.08
PC 3/8-01	3/8	R1/8	0.32	1.20	1.04	0.79	0.70	0.79	6.00	23.00	1.25
PC 3/8-02	3/8	R1/4	0.43	1.18	0.95	0.79	0.70	0.70	8.50	35.00	1.90
PC 3/8-03	3/8	R3/8	0.47	1.16	0.91	0.79	0.70	0.92	8.50	35.00	1.90
PC 3/8-04	3/8	R1/2	0.59	1.20	0.89	0.79	0.83	1.72	8.50	35.00	1.90
PC 1/2-02	1/2	R1/4	0.43	1.42	1.18	0.93	0.83	1.51	8.50	35.00	1.90
PC 1/2-03	1/2	R3/8	0.47	1.26	1.00	0.93	0.83	1.27	11.00	59.00	3.20
PC 1/2-04	1/2	R1/2	0.59	1.34	1.02	0.93	0.83	1.74	11.00	59.00	3.20
PC 5/8-03	5/8	R3/8	0.47	1.55	1.30	0.95	0.95	2.09	11.00	83.30	4.51
PC 5/8-04	5/8	R1/2	0.59	1.63	1.32	0.95	0.95	2.39	13.00	114.00	6.18

Unit : inch

Model	Tube dia. φD	NPT	A	B	L	C	H	Weight (OZ)	Orifice φMM	Eff.a. mm2	CV
PC 5/32-U10U	5/32	10-32UNF	0.14	0.79	0.65	0.59	7/16	0.24	1.80	1.90	0.10
PC 5/32-N1U	5/32	1/8-27NP	0.31	0.83	0.67	0.59	7/16	0.33	3.00	5.30	0.29
PC 5/32-N2U	5/32	1/4-18NP	0.43	0.83	0.59	0.59	9/16	0.58	3.00	5.30	0.29
PC 3/16-U10U	3/16	10-32UNF	0.14	0.87	0.73	0.67	1/2	0.36	1.80	1.90	0.10
PC 3/16-N1U	3/16	1/8	0.31	0.89	0.73	0.67	1/2	0.40	4.00	7.00	0.38
PC 3/16-N2U	3/16	1/4	0.43	0.96	0.73	0.67	9/16	0.64	4.00	7.30	0.40
PC 3/16-N3U											
PC 1/4-U10U	1/4	10-32UNF	0.14	0.87	0.73	0.67	1/2	0.36	1.80	1.90	0.10
PC 1/4-N1U	1/4	1/8	0.31	0.89	0.73	0.67	1/2	0.36	4.60	12.50	0.68
PC 1/4-N2U	1/4	1/4	0.43	0.96	0.73	0.67	6/16	0.62	4.60	12.50	0.68
PC 1/4-N3U	1/4	3/8-18NP	0.47	0.93	0.67	0.67	11/16	0.99	4.60	12.50	0.68
PC 5/16-N1U	5/16	1/8	0.31	1.10	0.94	0.71	9/16	0.55	6.00	20.00	1.08
PC 5/16-N2U	5/16	1/4	0.43	1.04	0.81	0.71	9/16	0.55	7.00	20.00	1.08
PC 5/16-N3U	5/16	3/8	0.47	0.94	0.69	0.71	11/16	0.80	7.00	20.00	1.08
PC 3/8-N1U	3/8	1/8	0.31	1.20	1.04	0.79	11/16	0.88	6.00	25.40	1.38
PC 3/8-N2U	3/8	1/4	0.43	1.18	0.94	0.79	11/16	0.76	8.50	33.70	1.83
PC 3/8-N3U	3/8	3/8	0.47	1.16	0.91	0.79	11/16	0.99	8.50	37.20	2.02
PC 3/8-N4U	3/8	1/2-14NP	0.59	1.20	0.89	0.79	7/8	1.83	8.50	31.30	1.70
PC 1/2-N2U	1/2	1/4	0.43	1.42	1.18	0.93	7/8	1.66	8.50	43.40	2.35
PC 1/2-N3U	1/2	3/8	0.47	1.26	1.00	0.93	7/8	1.34	11.00	59.00	3.20
PC 1/2-N4U	1/2	1/2	0.59	1.34	1.02	0.93	7/8	1.82	11.00	59.00	3.20
PC 5/8-N3U	5/8	3/8	0.47	1.56	1.30	0.98	1.0	2.46	11.00	83.30	4.51
PC 5/8-N4U	5/8	1/2	0.59	1.63	1.32	0.98	1.0	2.71	13.00	114.00	6.18

POC

Hex-Holed Straight



Unit : inch

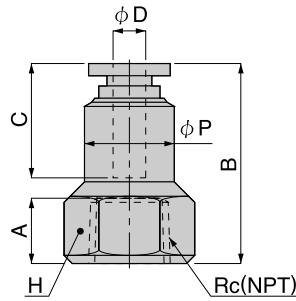
Model	Tube dia. φD(mm)	R	A	B	L	C	φP	H	Weight (OZ)	Orifice φMM	Eff.a. mm2	CV
POC 4-M5	4	M5	0.14	0.79	0.65	0.59	0.37	0.08	0.19	2.10	2.00	0.11
POC 4-M6	4	M6	0.18	0.85	0.67	0.59	0.37	0.12	0.19	3.00	5.20	0.28
POC 4-01	4	R1/8	0.31	0.83	0.67	0.59	0.37	0.10	0.28	2.60	3.60	0.20
POC 6-M5	6	M5	0.14	0.91	0.77	0.67	0.47	0.08	0.28	2.10	3.20	0.17
POC 6-M6	6	M6	0.18	0.89	0.71	0.67	0.47	0.12	0.23	2.10	7.40	0.40
POC 6-01	6	R1/8	0.31	0.89	0.73	0.67	0.47	0.16	0.28	4.20	11.00	0.60
POC 6-02	6	R1/4	0.43	0.89	0.65	0.67	0.55	0.16	0.49	4.20	11.00	0.60
POC 8-01	8	R1/8	0.31	1.10	0.94	0.71	0.55	0.20	0.49	5.30	17.00	0.92
POC 8-02	8	R1/4	0.43	1.04	0.81	0.71	0.55	0.24	0.51	6.30	20.00	1.08
POC 8-03	8	R3/8	0.47	0.94	0.69	0.71	0.67	0.24	0.77	6.30	20.00	1.08
POC 10-02	10	R1/4	0.43	1.18	0.94	0.79	0.71	0.24	0.77	6.30	20.00	1.08
POC 10-03	10	R3/8	0.17	1.16	0.91	0.79	0.71	0.24	0.95	6.30	20.00	1.08
POC 10-04	10	R1/2	0.59	1.20	0.89	0.79	0.83	0.24	1.69	6.30	20.00	1.08
POC 12-03	12	R3/8	0.47	1.26	1.00	0.92	0.83	0.31	1.18	8.50	40.00	2.17
POC 12-04	12	R1/2	0.59	1.34	1.02	0.92	0.83	0.31	1.69	8.50	40.00	2.17
POC 1/4-01	1/4	R1/8	0.31	0.89	0.73	0.67	0.47	0.16	0.28	4.20	11.00	0.60
POC 1/4-02	1/4	R1/4	0.43	0.89	0.65	0.67	0.55	0.16	0.49	4.20	11.00	0.60
POC 5/16-01	5/16	R1/8	0.31	1.10	0.94	0.71	0.55	0.20	0.49	5.30	17.00	0.92
POC 5/16-02	5/16	R1/4	0.43	1.04	0.81	0.71	0.55	0.24	0.51	6.30	20.00	1.08
POC 5/16-03	5/16	R3/8	0.47	0.94	0.69	0.71	0.67	0.24	0.77	6.30	20.00	1.08
POC 3/8-02	3/8	R1/4	0.43	1.18	0.94	0.79	0.71	0.24	0.77	6.30	20.00	1.08
POC 3/8-03	3/8	R3/8	0.47	1.16	0.91	0.79	0.71	0.24	0.95	6.30	20.00	1.08
POC 3/8-04	3/8	R1/2	0.59	1.20	0.89	0.79	0.83	0.24	1.69	6.30	20.00	1.08

Unit : inch

Model	Tube dia. φD	NPT	A	B	L	φP	C	H	Weight (OZ)	Orifice φMM	Eff.a. mm2	CV
POC 5/32-U10U	5/32	10-32UNF	0.14	0.79	0.65	0.37	0.59	3/32	0.19	2.50	4.70	0.25
POC 5/32-N1U	5/32	1/8	0.31	0.83	0.67	0.37	0.59	3/32	0.27	2.50	4.90	0.27
POC 1/4-U10U	1/4	10-32UNF	0.14	0.91	0.77	0.47	0.67	3/32	0.28	2.50	4.70	0.25
POC 1/4-N1U	1/4	1/8	0.31	0.87	0.73	0.47	0.67	5/32	0.29	4.00	12.80	0.69
POC 1/4-N2U	1/4	1/4	0.43	0.87	0.65	0.47	0.67	5/32	0.50	4.00	12.90	0.70
POC 5/16-N1U	5/16	1/8	0.31	1.10	0.94	0.55	0.71	3/16	0.51	5.00	18.30	0.99
POC 5/16-N2U	5/16	1/4	0.43	1.04	0.81	0.55	0.71	7/32	0.54	5.80	22.40	1.21
POC 5/16-N3U	5/16	3/8	0.47	0.94	0.69	0.55	0.71	7/32	0.80	5.80	22.80	1.24
POC 3/8-N2U	3/8	1/4	0.43	1.18	0.94	0.71	0.79	7/32	0.80	5.80	23.00	1.25
POC 3/8-N3U	3/8	8/3	0.47	1.16	0.94	0.71	0.79	7/32	1.02	5.80	23.10	1.25
POC 3/8-N4U	3/8	1/2	0.59	1.20	0.89	0.71	0.79	7/32	1.73	5.80	22.80	1.24

PCF

Female Straight



Unit : inch

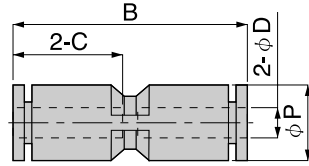
Model	Tube dia. ϕD (mm)	RC	A	B	ϕP	C	H	Weight (OZ)	Orifice ϕ MM	Eff.a. mm ²	CV
PCF 4-01	4	RC1/8	0.31	0.96	0.43	0.59	0.55	0.55	3.00	5.30	0.29
PCF 4-02	4	RC1/4	0.43	1.08	0.43	0.59	0.67	0.77	4.10	6.10	0.33
PCF 6-01	6	RC1/8	0.31	1.04	0.51	0.67	0.55	0.63	4.60	12.50	0.68
PCF 6-02	6	RC1/4	0.43	1.14	0.51	0.67	0.67	0.88	4.60	12.50	0.68
PCF 8-01	8	RC1/8	0.31	1.10	0.57	0.71	0.55	0.69	6.00	26.00	1.14
PCF 8-02	8	RC1/4	0.43	1.22	0.59	0.71	0.67	0.95	6.00	26.00	1.14
PCF 8-03	8	RC3/8	0.47	1.26	0.59	0.71	0.83	1.27	6.00	26.00	1.14
PCF 10-02	10	RC1/4	0.43	1.34	0.69	0.79	0.67	1.13	8.50	43.00	2.33
PCF 10-03	10	RC3/8	0.47	1.38	0.69	0.79	0.83	1.44	8.50	43.00	2.33
PCF 12-02	12	RC1/4	0.43	1.42	0.83	0.92	0.83	1.97	11.00	40.70	2.21
PCF 12-03	12	RC3/8	0.47	1.46	0.83	0.92	0.83	1.81	11.00	71.00	3.85
PCF 1/4-01	1/4	RC1/8	0.31	1.04	0.51	0.67	0.55	0.63	4.60	12.50	0.68
PCF 1/4-02	1/4	RC1/4	0.43	1.14	0.51	0.67	0.67	0.88	4.60	12.50	0.68
PCF 5/16-01	5/16	RC1/8	0.31	1.10	0.57	0.71	0.55	0.69	6.00	20.00	1.08
PCF 5/16-02	5/16	RC1/4	0.43	1.22	0.59	0.71	0.67	0.95	6.00	20.00	1.08
PCF 5/16-03	5/16	RC3/8	0.47	1.34	0.59	0.71	0.83	1.27	6.00	20.00	1.08
PCF 3/8-02	3/8	RC1/4	0.43	1.34	0.69	0.79	0.67	1.16	8.50	43.00	2.33
PCF 3/8-03	3/8	RC3/8	0.47	1.38	0.69	0.79	0.83	1.44	8.50	43.00	2.33

Unit : inch

Model	Tube dia. ϕD	NPT	A	B	ϕP	C	H	Weight (OZ)	Orifice ϕ MM	Eff.a. mm ²	CV
PCF 5/32-N1U	5/32	1/8	0.31	0.96	0.43	0.59	9/16	0.52	3.00	5.30	0.29
PCF 5/32-N2U	5/32	1/4	0.43	1.08	0.43	0.59	11/16	0.78	3.00	6.10	0.33
PCF 3/16-N1U	3/16	1/8	0.31	1.04	0.51	0.69	9/16	0.64	4.00	5.90	0.32
PCF 3/16-N2U	3/16	1/4	0.43	1.14	0.51	0.69	11/16	0.89	4.00	6.90	0.37
PCF 1/4-N1U	1/4	1/8	0.31	1.04	0.51	0.69	9/16	0.62	4.60	12.50	0.68
PCF 1/4-N2U	1/4	1/4	0.43	1.14	0.51	0.69	11/16	0.88	4.60	12.50	0.68
PCF 5/16-N1U	5/16	1/8	0.31	1.10	0.55	0.71	9/16	0.64	6.00	20.00	1.08
PCF 5/16-N2U	5/16	1/4	0.43	1.22	0.59	0.71	11/16	0.98	6.00	20.00	1.08
PCF 5/16-N3U	5/16	3/8	0.47	1.26	0.59	0.71	7/8	1.33	6.00	20.00	1.08
PCF 3/8-N2U	3/8	1/4	0.43	1.34	0.69	0.79	11/16	1.20	8.50	31.90	1.73
PCF 3/8-N3U	3/8	3/8	0.47	1.26	0.69	0.79	7/8	1.57	8.50	33.50	1.82
PCF 1/2-N2U	1/2	1/4	0.43	1.34	0.82	0.89	7/8	2.04	11.00	40.70	2.21
PCF 1/2-N3U	1/2	3/8	0.47	1.38	0.82	0.89	7/8	1.84	11.00	71.00	3.85

PU

Union Straight

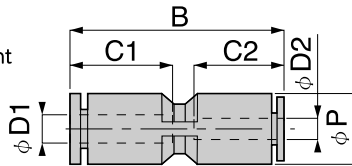


Unit : inch

Model	Tube dia. φD(mm)	B	φP	C	Weight (OZ)	Orifice φMM	Eff.a. mm2	CV
PU 4	4	1.22	0.39	0.59	0.18	3.80	5.30	0.29
PU 6	6	1.38	0.49	0.67	0.23	5.50	12.50	0.69
PU 8	8	1.50	0.57	0.71	0.33	7.00	20.00	1.08
PU 10	10	1.73	0.69	0.79	0.56	9.00	35.00	1.90
PU 12	12	1.89	0.83	0.92	0.77	11.00	59.00	3.20
PU 16	16	1.97	0.98	0.96	0.88	13.00	147.60	8.00
PU 1/4	1/4	1.40	0.49	0.67	0.23	5.50	12.50	0.68
PU 5/16	5/16	1.52	0.57	0.71	0.35	7.00	20.00	1.08
PU 3/8	3/8	1.73	0.69	0.79	0.56	9.00	35.00	1.90
PU 1/2	1/2	1.89	0.83	0.92	0.74	11.00	69.60	3.77
PU 5/8	5/8	1.97	0.98	0.96	0.88	13.00	147.60	8.00
PU 5/32	5/32	1.22	0.39	0.59	0.17	3.00	5.30	0.29
PU 3/16	3/16	1.38	0.49	0.67	0.24	4.00	6.20	0.34

PG

Different Diam. Union Straight

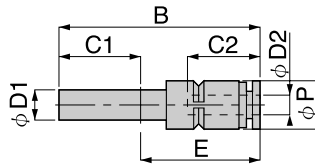


Unit : inch

Model	Tube dia. φD1(mm)	Tube dia. φD2(mm)	B	φP	C1	C2	Weight (OZ)	Orifice φMM	Eff.a. mm2	CV
PG 6-4	6	4	1.36	0.49	0.67	0.59	0.23	3.00	5.30	0.29
PG 8-6	8	6	1.52	0.57	0.71	0.67	0.32	5.50	12.50	0.68
PG 10-8	10	8	1.73	0.69	0.79	0.71	0.51	7.00	20.00	1.08
PG 12-10	12	10	2.11	0.83	0.92	0.79	0.79	9.00	35.00	1.90
PG 12-3/8	12	3/8	2.11	0.83	0.92	0.79	0.79	9.00	35.00	1.90
PG 16-12	16	12	1.95	0.95	0.96	0.92	0.93	10.00	88.60	4.80
PG 1/4-4	1/4	4	1.36	0.49	0.67	0.59	0.23	3.00	5.30	0.29
PG 5/16-1/4	5/16	1/4	1.52	0.57	0.71	0.67	0.32	3.00	12.50	0.68
PG 3/8-5/16	3/8	5/16	1.73	0.69	0.79	0.71	0.53	5.50	20.00	1.08
PG 1/2-3/8	1/2	3/8	1.89	0.85	0.92	0.85	0.72	9.00	50.80	2.75
PG 5/8-1/2	5/8	1/2	1.97	0.98	0.96	0.92	0.92	10.00	90.60	4.91
PG 3/16-5/32	3/16	5/32	1.36	0.49	0.67	0.59	0.23	3.00	5.30	0.29
PG 1/4-3/16	1/4	3/16	1.38	0.49	0.67	0.67	0.23	4.00	6.70	0.36
PG 1/4-5/32	1/4	5/32	1.36	0.49	0.67	0.59	0.22	3.00	6.40	0.35

PGJ

Reducer



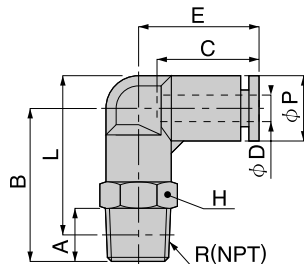
Unit : inch

Model	Tube dia. ϕD(mm)	Tube dia. ϕD(mm)	B	ϕP	C1	C2	E	Weight (OZ)	Orifice ϕMM	Eff.a. mm2	CV
PGJ 6-4	6	4	1.65	0.39	0.67	0.59	0.77	0.12	4.00	5.30	0.29
PGJ 8-4	8	4	1.75	0.49	0.71	0.59	0.83	0.18	6.00	5.30	0.29
PGJ 8-6	8	6	1.77	0.49	0.71	0.67	0.85	0.18	5.00	9.00	0.49
PGJ 10-6	10	6	1.85	0.57	0.79	0.67	0.87	0.25	5.00	9.00	0.49
PGJ 10-8	10	8	1.85	0.57	0.79	0.71	0.85	0.26	7.50	20.00	1.08
PGJ 12-6	12	6	2.11	0.69	0.92	0.67	1.00	0.33	9.00	9.00	0.49
PGJ 12-8	12	8	2.13	0.69	0.92	0.71	0.98	0.37	9.00	20.00	1.08
PGJ 12-10	12	10	2.15	0.69	0.92	0.79	1.00	0.40	9.00	35.00	1.90
PGJ 8-1/4	8	1/4	1.77	0.49	0.71	0.67	0.85	0.18	5.00	9.00	0.49
PGJ 10-1/4	10	1/4	1.85	0.57	0.79	0.67	0.87	0.25	4.00	9.00	0.49
PGJ 10-5/16	10	5/16	1.85	0.57	0.79	0.71	0.85	0.26	6.00	20.00	1.08
PGJ 12-1/4	12	1/4	2.11	0.69	0.92	0.67	1.00	0.33	4.00	9.00	0.49
PGJ 12-5/16	12	5/16	2.13	0.69	0.92	0.71	0.98	0.37	6.00	20.00	1.08
PGJ 12-3/8	12	3/8	2.15	0.69	0.92	0.79	1.02	0.40	8.00	35.00	1.90

Unit : inch

Model	Tube dia. ϕD1	Tube dia. ϕD2	B	ϕP	C1	C2	E	Weight (OZ)	Orifice ϕMM	Eff.a. mm2	CV
PGJ 1/4-5/32	1/4	5/32	1.65	0.39	0.67	0.59	0.77	0.12	2.50	6.50	0.35
PGJ 5/16-5/32	5/16	5/32	1.75	0.49	0.71	0.59	0.83	0.17	2.50	6.00	0.33
PGJ 5/16-1/4	5/16	1/4	1.77	0.49	0.71	0.67	0.85	0.17	4.00	9.00	0.49
PGJ 3/8-1/4	3/8	1/4	1.85	0.57	0.79	0.67	0.87	0.25	4.00	9.00	0.49
PGJ 3/8-5/16	3/8	5/16	1.85	0.57	0.79	0.71	0.85	0.25	7.50	20.00	1.08

PL Elbow



Unit : inch

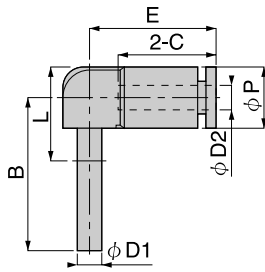
Model	Tube dia. ϕ D(mm)	R	A	B	L	Φ P	C	E	H	Weight (OZ)	Orifice ϕ MM	Eff.a. mm ²	CV
PL 4-M5	4	M5	0.14	0.85	0.75	0.39	0.59	0.67	0.39	0.32	1.80	1.50	0.08
PL 4-M6	4	M6	0.18	0.89	0.75	0.39	0.59	0.67	0.39	0.33	3.00	4.20	0.23
PL 4-01	4	R1/8	0.31	0.92	0.77	0.39	0.59	0.73	0.39	0.42	3.00	4.20	0.23
PL 4-02	4	R1/4	0.43	1.04	0.81	0.39	0.59	0.73	0.55	0.74	3.00	4.20	0.23
PL 6-M5	6	M5	0.14	0.87	0.75	0.49	0.67	0.77	0.47	0.42	1.80	1.50	0.08
PL 6-M6	6	M6	0.18	0.91	0.75	0.49	0.67	0.77	0.47	0.44	3.00	6.10	0.33
PL 6-01	6	R1/8	0.31	0.98	0.83	0.49	0.67	0.79	0.47	0.49	4.60	10.00	0.54
PL 6-02	6	R1/4	0.43	1.10	0.87	0.49	0.67	0.79	0.55	0.77	4.60	10.00	0.54
PL 6-03	6	R3/8	0.47	1.18	0.92	0.49	0.67	0.79	0.67	1.23	4.60	10.00	0.54
PL 8-01	8	R1/8	0.31	1.10	0.94	0.57	0.71	0.91	0.55	0.63	6.00	16.50	0.89
PL 8-02	8	R1/4	0.43	1.22	0.98	0.57	0.71	0.91	0.55	0.84	6.00	16.50	0.89
PL 8-03	8	R3/8	0.47	1.30	1.04	0.57	0.71	0.91	0.67	1.30	6.00	16.50	0.89
PL 10-01	10	R1/8	0.31	1.42	0.18	0.69	0.79	1.04	0.67	1.09	6.00	22.40	0.21
PL 10-02	10	R1/4	0.43	1.46	1.20	0.69	0.79	1.04	0.67	1.20	8.00	30.00	1.63
PL 10-03	10	R3/8	0.47	1.57	1.26	0.69	0.79	1.04	0.67	1.48	8.00	30.00	1.63
PL 10-04	10	R1/2	0.59	1.48	1.26	0.69	0.79	1.04	0.83	2.25	8.00	30.00	1.63
PL 12-02	12	R1/4	0.43	1.54	1.28	0.83	0.92	1.16	0.83	1.78	8.00	30.00	1.63
PL 12-03	12	R3/8	0.47	1.63	1.34	0.83	0.92	1.16	0.83	1.81	10.00	47.00	2.55
PL 12-04	12	R1/2	0.59	1.30	1.14	0.83	0.92	1.16	0.83	2.32	10.00	47.00	2.55
PL 16-03	16	R3/8	0.47	1.85	1.59	0.98	0.96	1.32	0.87	2.87	13.00	80.20	4.35
PL 16-04	16	R1/2	0.59	2.01	1.69	0.98	0.96	1.32	0.87	3.01	13.00	93.30	5.06
PL 1/4-01	1/4	R1/8	0.31	0.98	0.83	0.49	0.67	0.79	0.47	0.49	4.60	10.00	0.54
PL 1/4-02	1/4	R1/4	0.43	1.10	0.87	0.49	0.67	0.79	0.55	0.77	4.60	10.00	0.54
PL 1/4-03	1/4	R3/8	0.47	1.18	0.92	0.49	0.67	0.79	0.67	1.23	4.60	10.00	0.54
PL 5/16-01	5/16	R1/8	0.31	1.10	0.94	0.57	0.71	0.91	0.55	0.63	6.00	16.50	0.89
PL 5/16-02	5/16	R1/4	0.43	1.22	0.98	0.57	0.71	0.91	0.55	0.84	6.00	16.50	0.89
PL 5/16-03	5/16	R3/8	0.47	1.30	1.04	0.57	0.71	0.91	0.67	1.30	6.00	16.50	0.89
PL 3/8-02	3/8	R1/4	0.43	1.46	1.20	0.69	0.79	1.04	0.67	1.20	8.00	30.00	1.63
PL 3/8-03	3/8	R3/8	0.47	1.57	1.26	0.69	0.79	1.04	0.67	1.48	8.00	30.00	1.63
PL 3/8-04	3/8	R1/2	0.59	1.48	1.26	0.69	0.79	1.04	0.83	2.25	8.00	30.00	1.63
PL 1/2-02	1/2	R1/4	0.43	1.50	1.26	0.83	0.92	1.16	0.83	1.78	8.00	30.00	1.63
PL 1/2-03	1/2	R3/8	0.47	1.54	1.28	0.83	0.92	1.16	0.83	1.83	10.00	47.00	2.55
PL 1/2-04	1/2	R1/2	0.59	1.62	1.34	0.83	0.92	1.16	0.83	2.38	10.00	47.00	2.55
PL 5/8-03	5/8	R3/8	0.47	1.85	1.59	0.98	0.94	1.30	0.87	2.89	13.00	80.20	4.35
PL 5/8-04	5/8	R1/2	0.59	2.01	1.69	0.98	0.94	1.30	0.87	3.01	13.00	93.30	5.06

Unit : inch

Model	Tube dia. ϕ D	NPT	A	B	L	Φ P	C	E	H	Weight (OZ)	Orifice ϕ MM	Eff.a. mm ²	CV
PL 5/32-U10U	5/32	10-32UNF	0.14	0.85	0.75	0.39	0.59	0.67	7/16	0.29	1.80	1.50	0.08
PL 5/32-N1U	5/32	1/8	0.31	0.93	0.77	0.39	0.59	0.73	7/16	0.41	2.80	4.20	0.23
PL 5/32-N2U	5/32	1/4	0.43	1.04	0.81	0.39	0.59	0.73	9/16	0.71	2.80	4.20	0.23
PL 3/16-U10U	3/16	10-32UNF	0.14	0.87	0.75	0.45	0.67	0.77	1/2	0.45	1.80	1.50	0.08
PL 3/16-N1U	3/16	1/8	0.31	0.98	0.83	0.45	0.67	0.79	1/2	0.52	3.50	5.80	0.31
PL 3/16-N2U	3/16	1/4	0.43	1.10	0.87	0.45	0.67	0.79	9/16	0.80	3.50	5.80	0.31
PL 3/16-N3U	3/16	3/8	0.47	1.18	0.93	0.45	0.67	0.79	11/16	1.28	3.50	5.80	0.31
PL 1/4-U10U	1/4	10-32UNF	0.14	0.87	0.75	0.45	0.67	0.77	1/2	0.44	1.80	1.50	0.08
PL 1/4-N1U	1/4	1/8	0.31	0.98	0.83	0.45	0.67	0.79	1/2	0.51	4.60	10.00	0.54
PL 1/4-N2U	1/4	1/4	0.43	1.10	0.87	0.45	0.67	0.79	9/16	0.79	4.60	10.00	0.54
PL 1/4-N3U	1/4	3/8	0.47	1.18	0.93	0.45	0.67	0.79	11/16	1.26	4.60	10.00	0.54
PL 5/16-N1U	5/16	1/8	0.31	1.10	0.94	0.57	0.71	0.91	9/16	0.65	6.00	16.50	0.89
PL 5/16-N2U	5/16	1/4	0.43	1.22	0.98	0.57	0.71	0.91	9/16	0.85	6.00	16.50	0.89
PL 5/16-N3U	5/16	3/8	0.47	1.30	1.04	0.57	0.71	0.91	11/16	1.33	6.00	16.50	0.89
PL 3/8-N1U	3/8	1/8	0.31	1.42	1.18	0.69	0.79	1.04	9/16	1.12	6.00	22.40	1.21
PL 3/8-N2U	3/8	1/4	0.43	1.46	1.20	0.69	0.79	1.04	11/16	1.21	8.00	30.00	1.63
PL 3/8-N3U	3/8	3/8	0.47	1.57	1.26	0.69	0.79	1.04	11/16	1.51	8.00	30.00	1.63
PL 3/8-N4U	3/8	1/2	0.59	1.48	1.26	0.69	0.79	1.04	7/8	2.31	8.00	30.00	1.63
PL 1/2-N2U	1/2	1/4	0.43	1.54	1.30	0.83	0.93	1.16	7/8	1.80	8.00	30.00	1.63
PL 1/2-N3U	1/2	3/8	0.47	1.54	1.28	0.83	0.93	1.16	7/8	1.85	10.00	47.00	2.55
PL 1/2-N4U	1/2	1/2	0.59	1.65	1.34	0.83	0.93	1.16	7/8	2.39	10.00	47.00	2.55
PL 5/8-N3U	5/8	3/8-18NPT	0.43	1.85	1.59	0.98	0.95	1.31	1.0	3.17	11.00	80.20	4.35
PL 5/8-N4U	5/8	1/2-14NPT	0.59	2.01	1.69	0.98	0.95	1.31	1.0	3.28	13.00	93.30	5.06

PLJ

Socket Elbow

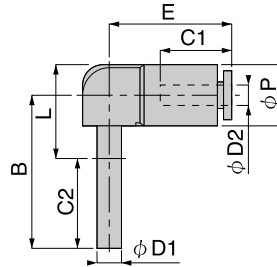


Unit : inch

Model	Tube dia. $\phi D1$ (mm)	Tube dia. $\phi D2$ (mm)	B	ΦP	C	E	Weight (OZ)	Orifice ϕ MM	Eff.a. mm2	CV
PLJ 4	4	4	0.98	0.39	0.59	0.79	0.12	2.50	2.00	0.11
PLJ 6	6	6	1.12	0.49	0.67	0.91	0.19	4.00	7.50	0.41
PLJ 8	8	8	1.20	0.57	0.71	1.02	0.28	6.00	16.50	0.89
PLJ 10	10	10	1.32	0.69	0.79	1.18	0.44	7.50	30.00	1.63
PLJ 12	12	12	1.52	0.83	0.92	1.28	0.62	9.50	42.50	2.30
PLJ 1/4	1/4	1/4	1.12	0.49	0.67	0.91	0.19	4.00	7.50	0.41
PLJ 5/16	5/16	5/16	1.20	0.57	0.71	1.02	0.28	6.00	16.50	0.89
PLJ 3/8	3/8	3/8	1.32	0.69	0.76	1.18	0.44	7.50	30.00	1.63

PLGJ

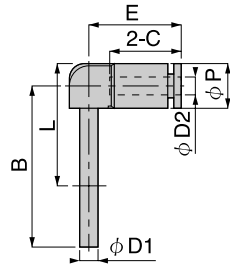
Different Diam. Socket Elbow



Unit : inch

Model	Tube dia. $\phi D1$ (mm)	Tube dia. $\phi D2$ (mm)	B	ΦP	C1	C2	E	Weight (OZ)	Orifice ϕ MM	Eff.a. mm2	CV
PLGJ 6-4	6	4	1.12	0.49	0.67	0.59	0.87	0.19	2.50	4.60	0.25
PLGJ 8-6	8	6	1.20	0.57	0.71	0.67	1.02	0.25	4.00	10.40	0.56
PLGJ 10-8	10	8	1.32	0.69	0.79	0.71	1.14	0.39	6.00	17.40	0.94
PLGJ 12-10	12	10	1.54	0.83	0.92	0.79	1.28	0.60	7.50	28.00	1.52
PLGJ 5/16-1/4	5/16	1/4	1.20	0.57	0.71	0.67	1.02	0.26	4.00	12.80	0.69
PLGJ 3/8-5/16	3/8	5/16	1.32	0.69	0.79	0.71	1.14	0.39	6.00	17.60	0.95

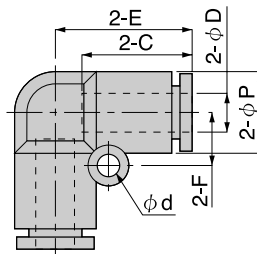
PLLJ Long Socket Elbow



Unit : inch

Model	Tube dia. ϕD1(mm)	Tube dia. ϕD2(mm)	B	ϕP	C	E	Weight (OZ)	Orifice ϕMM	Eff.a. mm2	CV
PLLJ 4	4	4	1.42	0.39	0.59	0.79	0.14	4.00	1.50	0.08
PLLJ 6	6	6	1.65	0.49	0.67	0.91	0.19	5.50	8.90	0.48
PLLJ 8	8	8	1.83	0.57	0.71	1.00	0.30	8.50	17.60	0.95
PLLJ 10	10	10	2.03	0.69	0.79	1.16	0.48	13.50	26.20	1.42
PLLJ 12	12	12	2.09	0.83	0.92	1.28	0.69	19.50	42.50	2.30
PLLJ 1/4	1/4	1/4	1.65	0.49	0.67	0.91	0.19	5.50	9.40	0.51
PLLJ 5/16	5/16	5/16	1.83	0.57	0.71	1.00	0.30	8.50	17.60	0.95
PLLJ 3/8	3/8	3/8	2.03	0.69	0.79	1.16	0.48	13.50	26.40	1.43

PV Union Elbow

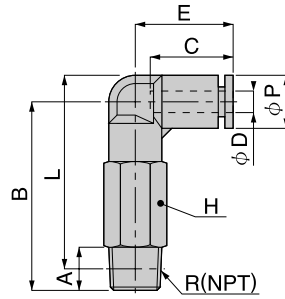


Unit : inch

Model	Tube dia. ϕD(mm)	ϕP	C	E	ϕd	F	Weight (OZ)	Orifice ϕMM	Eff.a. mm2	CV
PV 4	4	0.39	0.59	0.67	-	-	0.18	2.80	4.20	0.23
PV 6	6	0.49	0.67	0.81	0.13	0.31	0.26	5.00	10.00	0.54
PV 8	8	0.59	0.71	0.87	0.18	0.39	0.35	7.00	16.50	0.89
PV 10	10	0.69	0.79	1.02	0.17	0.47	0.60	9.00	30.00	1.63
PV 12	12	0.83	0.92	1.14	0.17	0.55	0.86	11.00	47.00	2.55
PV 16	16	0.98	0.94	1.30	0.17	0.47	1.06	13.00	91.60	4.96
PV 1/4	1/4	0.49	0.67	1.20	0.13	0.31	0.26	5.00	10.00	0.54
PV 5/16	5/16	0.57	0.71	0.87	0.17	0.39	0.37	7.00	16.50	0.89
PV 3/8	3/8	0.69	0.79	1.02	0.17	0.47	0.63	8.00	30.00	1.63
PV 5/32	5/32	0.39	0.59	0.67	-	-	0.18	2.80	4.20	0.23
PV 3/16	3/16	0.49	0.67	0.84	0.13	0.31	0.27	4.00	5.70	0.31
PV 1/2	1/2	0.83	0.93	1.14	0.17	0.55	0.82	11.00	47.00	2.55

PLL

Long Elbow



Unit : inch

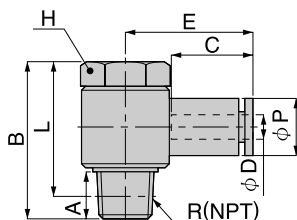
Model	Tube dia. ϕ D(mm)	R	A	B	L	Φ P	C	E	H	Weight (OZ)	Orifice ϕ MM	Eff.a. mm ²	CV
PLL 4-M5	4	M5	0.14	1.28	1.16	0.39	0.59	0.73	0.39	0.95	1.80	1.50	0.08
PLL 4-01	4	R1/8	0.31	1.46	1.28	0.39	0.59	0.67	0.39	0.98	3.00	4.20	0.23
PLL 6-01	6	R1/8	0.31	1.50	1.34	0.49	0.67	0.79	0.47	1.41	4.60	10.00	0.54
PLL 6-02	6	R1/4	0.43	1.61	1.38	0.49	0.67	0.79	0.55	2.11	4.60	10.00	0.54
PLL 6-03	6	R3/8	0.47	1.71	1.46	0.49	0.67	0.79	0.67	3.31	4.60	9.50	0.51
PLL 8-01	8	R1/8	0.31	1.71	1.55	0.57	0.71	0.89	0.55	1.98	6.00	16.50	0.89
PLL 8-02	8	R1/4	0.43	1.83	1.59	0.57	0.71	0.89	0.55	2.30	6.00	16.50	0.89
PLL 8-03	8	R3/8	0.47	1.91	1.65	0.57	0.71	0.89	0.67	3.55	6.00	17.80	0.96
PLL 10-02	10	R1/4	0.43	2.15	1.91	0.69	0.79	1.02	0.67	3.52	8.00	30.00	1.63
PLL 10-03	10	R3/8	0.47	2.18	1.93	0.69	0.79	1.02	0.67	3.96	8.00	30.00	1.63
PLL 10-04	10	R1/2	0.59	2.36	2.05	0.69	0.79	1.02	0.83	6.50	8.00	32.10	1.74
PLL 12-02	12	R1/4	0.43	2.36	2.13	0.83	0.92	1.16	0.83	6.07	8.00	39.10	2.12
PLL 12-03	12	R3/8	0.47	2.40	2.15	0.83	0.92	1.16	0.83	5.80	10.00	44.00	2.38
PLL 12-04	12	R1/2	0.59	2.52	2.20	0.83	0.92	1.16	0.83	6.61	10.00	54.20	2.94
PLL 1/4-01	1/4	R1/8	0.31	1.50	1.34	0.49	0.67	0.79	0.47	1.41	4.60	10.00	0.54
PLL 1/4-02	1/4	R1/4	0.43	1.61	1.38	0.49	0.67	0.79	0.55	2.11	4.60	10.00	0.54
PLL 5/16-01	5/16	R1/8	0.31	1.71	1.55	0.57	0.71	0.89	0.55	1.98	6.00	16.50	0.89
PLL 5/16-02	5/16	R1/4	0.43	1.83	1.59	0.57	0.71	0.89	0.55	2.30	6.00	16.50	0.89
PLL 3/8-02	3/8	R1/4	0.43	2.15	1.91	0.69	0.79	1.02	0.67	3.55	8.00	30.00	1.63
PLL 3/8-03	3/8	R3/8	0.47	2.18	1.93	0.69	0.79	1.02	0.67	3.98	8.00	30.00	1.63

Unit : inch

Model	Tube dia. ϕ D	NPT	A	B	L	Φ P	C	E	H	Weight (OZ)	Orifice ϕ MM	Eff.a. mm ²	CV
PLL 5/32-U10U	5/32	10-32UNF	0.14	1.28	1.16	0.39	0.59	0.67	7/16	0.64	1.80	1.50	0.08
PLL 5/32-N1U	5/32	1/8	0.31	1.46	1.28	0.39	0.59	0.73	7/16	0.68	2.80	4.20	0.23
PLL 3/16-N1U	3/16	1/8	0.31	1.50	1.34	0.45	0.67	0.79	1.20	1.00	3.50	5.60	0.30
PLL 3/16-N2U	3/16	1/4	0.43	1.61	1.38	0.45	0.67	0.79	9/16	1.38	3.50	5.50	0.30
PLL 3/16-N3U	3/16	3/8	0.47	1.71	1.46	0.45	0.67	0.79	11/16	2.26	3.50	5.40	0.29
PLL 1/4-N1U	1/4	1/8	0.31	1.50	1.34	0.45	0.67	0.79	1/2	0.99	4.60	10.00	0.54
PLL 1/4-N2U	1/4	1/4	0.43	1.61	1.38	0.45	0.67	0.79	9/16	1.38	4.60	10.00	0.54
PLL 1/4-N3U	1/4	3/8	0.47	1.71	1.46	0.45	0.67	0.79	11/16	2.25	4.60	9.50	0.51
PLL 5/16-N1U	5/16	1/8	0.31	1.71	1.56	0.57	0.71	0.91	9/16	1.29	6.00	16.50	0.89
PLL 5/16-N2U	5/16	1/4	0.43	1.81	1.59	0.57	0.71	0.91	9/16	1.50	6.00	16.50	0.89
PLL 5/16-N3U	5/16	3/8	0.47	1.91	1.65	0.57	0.71	0.91	11/16	2.41	6.00	17.80	0.96
PLL 3/8-N2U	3/8	1/4	0.43	2.15	1.91	0.69	0.79	1.04	11/16	2.38	8.00	30.00	1.63
PLL 3/8-N3U	3/8	3/8	0.47	2.19	1.93	0.69	0.79	1.04	11/16	2.68	8.00	30.00	1.63
PLL 3/8-N4U	3/8	1/2	0.59	2.36	2.05	0.69	0.79	1.04	7/8	4.53	8.00	32.10	0.74
PLL 1/2-N2U	1/2	1/4	0.43	2.36	2.13	0.83	0.93	1.16	7/8	4.20	8.00	39.10	2.12
PLL 1/2-N3U	1/2	3/8	0.47	2.40	2.15	0.83	0.93	1.16	7/8	4.08	10.00	44.00	2.38
PLL 1/2-N4U	1/2	1/2	0.59	2.52	2.20	0.83	0.93	1.16	7/8	4.59	10.00	54.20	2.94

PH

Universal Elbow



Unit : inch

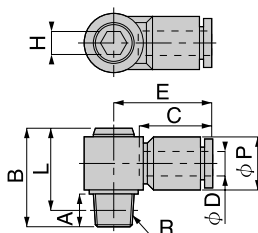
Model	Tube dia. ϕD(mm)	R	A	B	L	ϕP	C	E	H	Weight (OZ)	Orifice ϕMM	Eff.a. mm2	CV
PH 4-M5	4	M5	0.14	0.67	0.22	0.39	0.59	0.85	0.31	0.26	1.80	2.00	0.11
PH 4-M6	4	M6	0.14	0.71	0.22	0.39	0.59	0.85	0.31	0.26	3.00	3.40	0.18
PH 4-01	4	R1/8	0.31	1.06	0.47	0.39	0.59	0.89	0.55	0.70	4.00	4.60	0.25
PH 6-M5	6	M5	0.18	0.67	0.22	0.49	0.67	0.92	0.31	0.30	1.80	1.90	0.10
PH 6-M6	6	M6	0.18	0.71	0.22	0.49	0.67	0.92	0.31	0.74	3.00	3.30	0.18
PH 6-01	6	R1/8	0.31	1.06	0.47	0.49	0.67	0.94	0.55	1.25	4.00	10.90	0.59
PH 6-02	6	R1/4	0.43	1.24	0.53	0.49	0.67	1.06	0.67	1.14	4.60	11.60	0.63
PH 8-01	8	R1/8	0.31	1.06	0.47	0.57	0.71	1.02	0.55	1.30	4.00	14.90	0.81
PH 8-02	8	R1/4	0.43	1.24	0.53	0.57	0.71	1.12	0.67	2.09	5.10	19.70	1.07
PH 8-03	8	R3/8	0.47	0.42	0.61	0.57	0.71	1.20	0.83	1.92	6.00	21.40	1.16
PH 10-02	10	R1/4	0.43	0.24	0.57	0.69	0.79	1.20	0.67	2.20	5.10	23.10	1.25
PH 10-03	10	R3/8	0.47	0.42	0.61	0.69	0.79	1.30	0.83	2.32	6.60	31.50	1.71
PH 12-03	12	R3/8	0.47	0.42	0.67	0.83	0.92	1.38	0.83	3.43	6.60	39.70	2.15
PH 12-04	12	R1/2	0.59	0.59	0.65	0.83	0.92	1.50	0.94	3.52	8.00	49.80	2.70
PH 16-03	16	R3/8	0.47	0.81	0.83	0.98	0.94	1.44	0.94	3.73	6.60	64.20	3.48
PH 16-04	16	R1/2	0.59	0.91	0.87	0.98	0.94	1.44	0.94	0.74	8.00	62.10	3.37
PH 1/4-01	1/4	R1/8	0.31	1.06	0.47	0.49	0.67	0.96	0.55	1.25	4.00	10.90	0.59
PH 1/4-02	1/4	R1/4	0.43	1.24	0.53	0.49	0.67	1.06	0.67	1.14	4.60	11.60	0.63
PH 5/16-01	5/16	R1/8	0.31	1.06	0.47	0.57	0.71	1.02	0.55	1.30	4.00	14.90	0.81
PH 5/16-02	5/16	R1/4	0.43	1.24	0.53	0.57	0.71	1.12	0.67	2.09	5.10	19.70	1.07
PH 5/16-03	5/16	R3/8	0.47	1.42	0.61	0.57	0.71	1.18	0.83	1.92	6.00	21.40	1.16
PH 3/8-02	3/8	R1/4	0.43	1.24	0.57	0.69	0.79	1.20	0.67	2.20	5.10	23.10	1.25
PH 3/8-03	3/8	R3/8	0.47	1.42	0.61	0.69	0.79	1.28	0.83	2.20	6.60	31.50	1.71

Unit : inch

Model	Tube dia. ϕD	NPT	A	B	L	ϕP	C	E	H	Weight (OZ)	Orifice ϕMM	Eff.a. mm2	CV
PH 5/32-U10U	5/32	10-32UNF	0.14	0.67	0.22	0.39	0.59	0.85	5/16	0.26	1.80	2.00	0.11
PH 5/32-N1U	5/32	1/8	0.31	1.06	0.47	0.39	0.59	0.89	6/16	0.73	3.00	4.60	0.25
PH 3/16-U10U	3/16	10-32UNF	0.18	0.67	0.22	0.49	0.67	0.93	5/16	0.29	1.80	1.90	0.10
PH 3/16-N1U	3/16	1/8	0.31	1.06	0.47	0.49	0.67	0.94	9/16	0.76	4.00	5.90	0.32
PH 3/16-N2U	3/16	1/4	0.43	1.24	0.53	0.49	0.67	1.06	11/16	1.28	4.00	6.70	0.36
PH 1/4-U10U	1/4	10-32UNF	0.18	0.67	0.22	0.49	0.67	0.93	5/16	0.29	1.80	1.90	0.10
PH 1/4-N1U	1/4	1/8	0.31	1.06	0.47	0.49	0.67	0.94	9/16	0.75	4.00	10.50	0.57
PH 1/4-N2U	1/4	1/4	0.43	1.24	0.53	0.49	0.67	1.06	11/16	1.27	4.00	12.40	0.67
PH 5/16-N1U	5/16	1/8	0.31	1.06	0.47	0.57	0.71	1.02	9/16	0.80	5.50	14.90	0.81
PH 5/16-N2U	5/16	1/4	0.43	1.24	0.53	0.57	0.71	1.12	11/16	1.32	6.00	19.70	1.07
PH 5/16-N3U	5/16	3/8	0.47	1.42	0.61	0.57	0.71	1.20	7/8	2.17	6.00	21.40	1.16
PH 3/8-N2U	3/8	1/4	0.43	1.24	0.57	0.69	0.79	1.20	9/16	1.48	6.80	19.50	1.06
PH 3/8-N3U	3/8	3/8	0.47	1.42	0.61	0.69	0.79	1.30	7/8	2.39	8.00	25.50	1.38
PH 1/2-N3U	1/2	3/8	0.47	1.42	0.61	0.83	0.93	1.38	7/8	2.36	9.20	39.70	2.15
PH 1/2-N4U	1/2	1/2	0.59	1.59	0.65	0.83	0.93	1.50	1	3.48	10.00	49.80	2.70

POL

Hex. Holed Universal Elbow

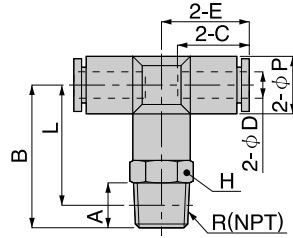


Unit : inch

Model	Tube dia. ϕD(mm)	R	A	B	L	ϕP	C	E	H	Weight (OZ)	Orifice ϕMM	Eff.a. mm2	CV
POL 4-M5	4	M5	0.14	0.69	0.26	0.39	0.59	0.79	0.16	0.23	1.80	2.10	0.11
POL 6-01	6	R1/8	0.31	0.94	0.45	0.51	0.67	0.92	0.22	0.53	4.60	7.00	0.38
POL 6-02	6	R1/4	0.43	1.06	0.49	0.51	0.67	0.92	0.22	0.76	4.60	7.40	0.40
POL 8-01	8	R1/8	0.31	1.06	0.47	0.55	0.71	1.04	0.31	0.77	6.00	14.00	0.76
POL 8-02	8	R1/4	0.43	1.18	0.51	0.55	0.71	1.04	0.31	0.99	6.00	12.40	0.67
POL 8-03	8	R3/8	0.47	1.22	0.53	0.55	0.71	1.04	0.31	1.28	6.00	13.60	0.74
POL 10-02	10	R1/4	0.43	1.34	0.57	0.71	0.79	1.20	0.39	1.44	8.00	22.90	1.24
POL 10-03	10	R3/8	0.47	1.38	0.61	0.71	0.79	1.20	0.39	1.74	8.00	22.60	1.22
POL 12-03	12	R3/8	0.47	1.54	0.67	0.83	0.92	1.44	0.47	2.39	10.00	37.30	2.02
POL 12-04	12	R1/2	0.59	1.65	0.65	0.83	0.92	1.44	0.47	2.92	10.00	32.40	1.76

PB

Tee



Unit : inch

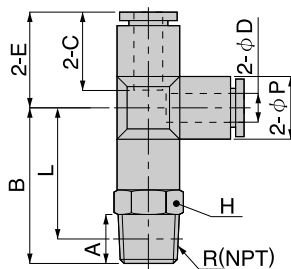
Model	Tube dia. φD(mm)	R	A	B	L	ΦP	C	E	H	Weight (OZ)	Orifice φMM	Eff.a. mm2	CV
PB 4-M5	4	M5	0.12	0.81	0.69	0.39	0.59	0.67	0.39	0.40	1.80	1.50	0.08
PB 4-M6	4	M6	0.16	0.85	0.69	0.39	0.59	0.67	0.39	0.40	3.00	4.10	0.22
PB 4-01	4	R1/8	0.31	0.92	0.77	0.39	0.59	0.67	0.39	0.49	3.00	4.10	0.22
PB 4-02	4	R1/4	0.43	1.04	0.85	0.39	0.59	0.67	0.55	0.84	3.00	4.10	0.22
PB 6-M5	6	M5	0.12	0.91	0.79	0.51	0.67	0.81	0.47	0.55	1.80	1.50	0.08
PB 6-M6	6	M6	0.16	0.94	0.79	0.51	0.67	0.81	0.47	0.56	3.00	6.80	0.37
PB 6-01	6	R1/8	0.31	1.02	0.87	0.51	0.67	0.81	0.47	0.62	4.60	10.00	0.54
PB 6-02	6	R1/4	0.43	1.14	0.91	0.51	0.67	0.81	0.55	0.90	4.60	10.00	0.54
PB 6-03	6	R3/8	0.47	1.22	0.96	0.51	0.67	0.81	0.67	1.36	4.60	10.00	0.54
PB 8-01	8	R1/8	0.31	1.04	0.89	0.59	0.71	0.89	0.55	0.79	6.00	16.50	0.89
PB 8-02	8	R1/4	0.43	1.04	0.92	0.59	0.71	0.89	0.55	0.99	6.00	16.50	0.89
PB 8-03	8	R3/8	0.47	1.16	0.98	0.59	0.71	0.89	0.67	1.44	6.00	16.50	0.89
PB 10-02	10	R1/4	0.43	1.24	1.18	0.69	0.79	1.00	0.67	1.46	8.00	30.00	1.63
PB 10-03	10	R3/8	0.47	1.42	1.20	0.69	0.79	1.00	0.67	1.78	8.00	30.00	1.63
PB 10-04	10	R1/2	0.59	1.46	1.26	0.69	0.79	1.00	0.83	2.55	8.00	30.00	1.63
PB 12-02	12	R1/4	0.43	1.57	1.26	0.83	0.92	1.10	0.83	2.16	8.00	30.00	1.63
PB 12-03	12	R3/8	0.47	1.50	1.28	0.83	0.92	1.10	0.83	2.16	10.00	47.00	2.55
PB 12-04	12	R1/2	0.59	1.54	1.34	0.83	0.92	1.10	0.83	2.71	10.00	47.00	2.55
PB 16-03	16	R3/8	0.47	1.65	1.59	0.98	0.98	0.32	0.87	3.34	11.00	80.10	4.34
PB 16-04	16	R1/2	0.59	1.85	1.69	0.98	0.98	0.32	0.87	3.48	13.00	90.80	4.92
PB 1/4-01	1/4	R1/8	0.31	2.01	0.87	0.51	0.67	0.79	0.47	0.62	4.60	10.00	0.54
PB 1/4-02	1/4	R1/4	0.43	1.14	0.91	0.51	0.67	0.79	0.55	0.90	4.60	10.00	0.54
PB 1/4-03	1/4	R3/8	0.47	1.22	0.96	0.51	0.67	0.79	0.67	1.36	4.60	10.00	0.54
PB 5/16-01	5/16	R1/8	0.31	1.04	0.89	0.59	0.71	0.89	0.55	0.79	6.00	16.50	0.89
PB 5/16-02	5/16	R1/4	0.43	1.16	0.92	0.59	0.71	0.89	0.55	0.99	6.00	16.50	0.89
PB 5/16-03	5/16	R3/8	0.47	1.24	0.98	0.59	0.71	0.89	0.67	1.44	6.00	16.50	0.89
PB 3/8-02	3/8	R1/4	0.43	1.42	1.18	0.69	0.79	1.00	0.67	1.46	8.00	30.00	1.63
PB 3/8-03	3/8	R3/8	0.47	1.46	1.20	0.69	0.79	1.00	0.67	1.80	8.00	30.00	1.63
PB 3/8-04	3/8	R1/2	0.59	1.57	1.26	0.69	0.79	1.00	0.83	2.55	8.00	30.00	1.63

Unit : inch

Model	Tube dia. φD	NPT	A	B	L	C	E	ΦP	H	Weight (OZ)	Orifice φMM	Eff.a. mm2	CV
PB 5/32-U10U	5/32	10-32UNF	0.14	0.81	0.69	0.59	0.67	0.39	7/16	0.37	1.80	1.50	0.08
PB 5/32-N1U	5/32	1/8	0.31	0.93	0.77	0.59	0.67	0.39	7/16	0.49	3.00	4.10	0.22
PB 5/32-N2U	5/32	1/4	0.43	1.04	0.85	0.59	0.67	0.39	7/16	0.79	3.00	4.10	0.22
PB 3/16-U10U	3/16	10-32UNF	0.14	0.91	0.79	0.67	0.81	0.45	1/2	0.57	1.80	1.50	0.08
PB 3/16-N1U	3/16	1/8	0.31	1.02	0.87	0.67	0.81	0.45	1/2	0.64	4.00	6.20	0.34
PB 3/16-N2U	3/16	1/4	0.43	1.14	0.91	0.67	0.81	0.45	9/16	0.91	4.00	6.00	0.33
PB 3/16-N3U	3/16	3/8	0.47	1.22	0.96	0.67	0.81	0.45	11/16	1.40	4.00	5.70	0.31
PB 1/4-U10U	1/4	10-32UNF	0.14	0.91	0.79	0.67	0.81	0.45	1/2	0.56	1.80	1.50	0.08
PB 1/4-N1U	1/4	1/8	0.31	1.02	0.87	0.67	0.81	0.45	1/2	0.64	4.60	10.00	0.54
PB 1/4-N2U	1/4	1/4	0.43	1.14	0.91	0.67	0.81	0.45	9/16	0.90	4.60	10.00	0.54
PB 1/4-N3U	1/4	3/8	0.47	1.22	0.96	0.67	0.81	0.45	11/16	1.36	4.60	10.00	0.54
PB 5/16-N1U	5/16	1/8	0.31	1.04	0.89	0.71	0.89	0.57	9/16	0.79	6.00	16.50	0.89
PB 5/16-N2U	5/16	1/4	0.43	1.46	0.93	0.71	0.89	0.57	9/16	1.00	6.00	16.50	0.89
PB 5/16-N3U	5/16	3/8	0.47	1.57	0.98	0.71	0.89	0.57	11/16	1.48	6.00	16.50	0.89
PB 3/8-N2U	3/8	1/4	0.43	1.42	1.18	0.79	1.00	0.69	11/16	1.49	8.00	31.20	1.69
PB 3/8-N3U	3/8	3/8	0.47	1.46	1.20	0.79	1.00	0.69	11/16	1.77	8.00	31.90	1.73
PB 3/8-N4U	3/8	1/2	0.59	1.57	1.26	0.79	1.00	0.69	7/8	2.59	8.00	28.80	1.56
PB 1/2-N2U	1/2	1/4	0.43	1.50	1.26	0.93	1.10	0.83	7/8	2.16	8.00	30.00	1.63
PB 1/2-N3U	1/2	3/8	0.47	1.54	1.28	0.93	1.10	0.83	7/8	2.19	10.00	47.00	2.55
PB 1/2-N4U	1/2	1/2	0.59	1.65	1.34	0.93	1.10	0.83	7/8	2.74	10.00	47.00	2.55

PD

Branch Tee



Unit : inch

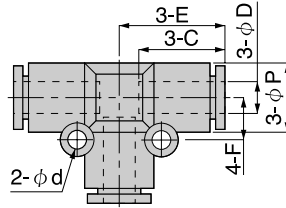
Model	Tube dia. φD(mm)	R	A	B	L	φP	C	E	H	Weight (OZ)	Orifice φMM	Eff.a. mm2	CV
PD 4-M5	4	M5	0.12	0.81	0.69	0.39	0.59	0.67	0.39	0.40	1.80	1.90	0.10
PD 4-M6	4	M6	0.16	0.85	0.69	0.39	0.59	0.67	0.39	0.56	3.00	5.30	0.29
PD 4-01	4	R1/8	0.31	0.96	0.81	0.39	0.59	0.67	0.39	0.51	3.00	5.30	0.29
PD 4-02	4	R1/4	0.43	1.08	0.81	0.39	0.59	0.67	0.55	0.83	3.00	5.30	0.29
PD 6-M5	6	M5	0.12	0.91	0.79	0.51	0.67	0.79	0.47	0.55	1.80	1.90	0.10
PD 6-M6	6	M6	0.16	0.94	0.79	0.51	0.67	0.79	0.47	0.56	3.00	6.40	0.35
PD 6-01	6	R1/8	0.31	1.02	0.87	0.51	0.67	0.79	0.47	0.60	4.60	12.50	0.68
PD 6-02	6	R1/4	0.43	1.14	0.91	0.51	0.67	0.79	0.55	0.92	4.60	12.50	0.68
PD 6-03	6	R3/8	0.47	1.22	0.96	0.51	0.67	0.79	0.67	1.36	4.60	12.50	0.68
PD 8-01	8	R1/8	0.31	1.12	0.94	0.59	0.71	0.87	0.55	0.79	6.00	20.00	1.08
PD 8-02	8	R1/4	0.43	1.24	0.98	0.59	0.71	0.87	0.55	1.00	6.00	20.00	1.08
PD 8-03	8	R3/8	0.47	1.30	1.04	0.59	0.71	0.87	0.67	1.44	6.00	20.00	1.08
PD 10-02	10	R1/4	0.43	1.42	1.18	0.69	0.79	1.00	0.67	1.46	8.00	35.00	1.90
PD 10-03	10	R3/8	0.47	1.46	1.20	0.69	0.79	1.00	0.67	1.78	8.00	35.00	1.90
PD 10-04	10	R1/2	0.59	1.57	1.26	0.69	0.79	1.00	0.83	2.53	8.00	35.00	1.90
PD 12-02	12	R1/4	0.43	1.50	1.26	0.83	0.92	1.10	0.83	2.15	8.00	35.00	1.90
PD 12-03	12	R3/8	0.47	1.54	1.28	0.83	0.92	1.10	0.83	2.20	10.00	59.00	3.20
PD 12-04	12	R1/2	0.59	1.65	1.34	0.83	0.92	1.10	0.83	2.73	10.00	59.00	3.20
PD 16-03	16	R3/8	0.47	1.85	1.59	0.98	0.94	1.32	0.87	3.15	11.00	79.50	4.31
PD 16-04	16	R1/2	0.59	2.01	1.61	0.98	0.94	1.32	0.87	3.48	13.00	92.80	5.03
PD 1/4-01	1/4	R1/8	0.31	1.02	0.87	0.51	0.67	0.79	0.47	0.62	4.60	12.50	0.68
PD 1/4-02	1/4	R1/4	0.43	1.14	0.91	0.51	0.67	0.79	0.55	0.90	4.60	12.50	0.68
PD 1/4-03	1/4	R3/8	0.47	1.22	0.96	0.51	0.67	0.79	0.67	1.37	4.60	12.50	0.68
PD 5/16-01	5/16	R1/8	0.31	1.12	0.96	0.59	0.71	0.87	0.55	0.79	6.00	20.00	1.08
PD 5/16-02	5/16	R1/4	0.43	1.22	0.98	0.59	0.71	0.87	0.55	1.00	6.00	20.00	1.08
PD 5/16-03	5/16	R3/8	0.47	1.30	1.04	0.59	0.71	0.87	0.67	1.44	6.00	20.00	1.08
PD 3/8-02	3/8	R1/4	0.43	1.42	1.18	0.69	0.79	1.00	0.67	1.50	8.00	35.00	1.90
PD 3/8-03	3/8	R3/8	0.47	1.46	1.20	0.69	0.79	1.00	0.67	1.80	8.00	35.00	1.90
PD 3/8-04	3/8	R1/2	0.59	1.57	1.26	0.69	0.79	1.00	0.83	2.53	8.00	35.00	1.90

Unit : inch

Model	Tube dia. φD	NPT	A	B	L	φP	C	E	H	Weight (OZ)	Orifice φMM	Eff.a. mm2	CV
PD 5/32-U10U	5/32	10-32UNF	0.14	0.81	0.69	0.39	0.59	0.67	7/16	0.37	1.80	1.90	0.10
PD 5/32-N1U	5/32	1/8	0.31	0.93	0.77	0.39	0.59	0.67	7/16	0.49	3.00	5.30	0.29
PD 5/32-N2U	5/32	1/4	0.43	1.04	0.85	0.39	0.59	0.67	7/16	0.79	3.00	5.30	0.29
PD 3/16-U10U	3/16	10-32UNF	0.14	0.91	0.79	0.45	0.67	0.81	1/2	0.57	1.80	1.90	0.10
PD 3/16-N1U	3/16	1/8	0.31	1.02	0.87	0.45	0.67	0.81	1/2	0.65	4.00	6.00	0.33
PD 3/16-N2U	3/16	1/4	0.43	1.14	0.91	0.45	0.67	0.81	9/16	0.92	4.00	5.60	0.30
PD 3/16-N3U	3/16	3/8	0.47	1.22	0.96	0.45	0.67	0.81	11/16	1.40	4.00	5.80	0.31
PD 1/4-U10U	1/4	10-32UNF	0.14	0.91	0.79	0.45	0.67	0.81	1/2	0.56	1.80	1.90	0.10
PD 1/4-N1U	1/4	1/8	0.31	1.02	0.87	0.45	0.67	0.81	1/2	0.64	4.60	12.50	0.68
PD 1/4-N2U	1/4	1/4	0.43	1.14	0.91	0.45	0.67	0.81	9/16	0.90	4.60	12.50	0.68
PD 1/4-N3U	1/4	3/8	0.47	1.22	0.96	0.45	0.67	0.81	11/16	1.36	4.60	12.50	0.68
PD 5/16-N1U	5/16	1/8	0.31	1.04	0.89	0.57	0.71	0.89	9/16	0.82	6.00	20.00	1.08
PD 5/16-N2U	5/16	1/4	0.43	1.46	0.93	0.57	0.71	0.89	9/16	1.02	6.00	20.00	1.08
PD 5/16-N3U	5/16	3/8	0.47	1.57	0.98	0.57	0.71	0.89	11/16	1.49	6.00	20.00	1.08
PD 3/8-N2U	3/8	1/4	0.43	1.42	1.18	0.69	0.79	1.00	11/16	1.49	6.00	28.90	1.57
PD 3/8-N3U	3/8	3/8	0.47	1.46	1.20	0.69	0.79	1.00	11/16	1.78	8.00	29.70	1.61
PD 3/8-N4U	3/8	1/2	0.59	1.57	1.26	0.69	0.79	1.00	7/8	2.59	8.00	28.50	1.54
PD 1/2-N2U	1/2	1/4	0.43	1.50	1.26	0.83	0.93	1.10	7/8	2.18	8.00	35.00	1.90
PD 1/2-N3U	1/2	3/8	0.47	1.54	1.28	0.83	0.93	1.10	7/8	2.21	10.00	59.00	3.20
PD 1/2-N4U	1/2	1/2	0.59	1.65	1.34	0.83	0.93	1.10	7/8	2.70	10.00	59.00	3.20

PE

Union Tee

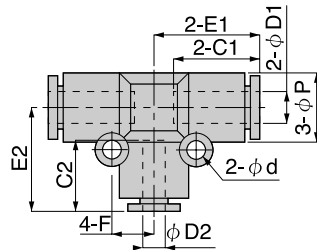


Unit : inch

Model	Tube dia. φD(mm)	φP	C	E	φd	F	Weight (OZ)	Orifice φMM	Eff. a. mm2	CV
PE 4	4	0.39	0.59	0.67	-	-	0.25	3.00	5.30	0.29
PE 6	6	0.51	0.67	0.79	0.13	0.31	0.37	4.60	12.50	0.68
PE 8	8	0.59	0.71	0.87	0.13	0.35	0.55	6.00	20.00	1.08
PE 10	10	0.71	0.79	1.00	0.17	0.47	0.90	8.00	35.00	1.90
PE 12	12	0.85	0.92	1.10	0.17	0.55	1.27	10.00	59.00	3.20
PE 16	16	1.00	0.94	1.30	0.17	0.47	1.53	13.00	89.80	4.87
PE 1/4	1/4	0.51	0.67	0.79	0.13	0.31	0.37	4.60	12.50	0.68
PE 5/16	5/16	0.59	0.71	0.87	0.13	0.35	0.53	6.00	20.00	1.08
PE 3/8	3/8	0.71	0.79	1.00	0.17	0.47	0.90	8.00	35.00	1.90
PE 5/32	5/32	0.39	0.59	0.67	-	-	0.26	3.00	5.30	0.29
PE 3/16	3/16	0.51	0.67	0.79	0.13	0.31	0.40	4.00	4.40	0.24
PE 1/2	1/2	0.85	0.93	1.13	0.17	0.55	1.20	10.70	59.00	3.20

PEG

Different Diam. Union Tee



Unit : inch

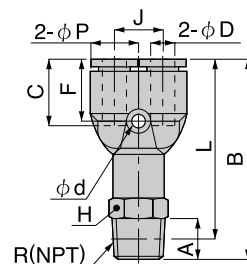
Model	Tube dia. φD1(mm)	Tube dia. φD2(mm)	φP	C1	C2	E1	E2	φd	F	Weight (OZ)	Orifice φMM	Eff. a. mm2	CV
PEG 6-4	6	4	0.51	0.67	0.59	0.81	0.79	0.13	0.31	0.43	3.00	4.10	0.22
PEG 8-6	8	6	0.59	0.73	0.73	0.89	0.81	0.13	0.35	0.59	5.00	10.30	0.56
PEG 10-8	10	8	0.69	0.81	0.81	1.00	0.98	0.17	0.47	0.94	7.00	19.60	1.06
PEG 12-10	12	10	0.83	0.92	0.93	1.16	1.16	0.17	0.55	1.38	9.00	32.50	1.76

Unit : inch

Model	Tube dia. φD1	Tube dia. φD2	φP	C1	C2	E1	E2	φd	F	Weight (OZ)	Orifice φMM	Eff. a. mm2	CV
PEG 3/16-5/32	3/16	5/32	0.51	0.67	0.59	0.81	0.79	0.13	0.31	0.39	3.00	4.20	0.23
PEG 1/4-3/16	1/4	3/16	0.59	0.73	0.67	0.89	0.81	0.13	0.35	0.38	4.00	6.20	0.34
PEG 5/16-1/4	5/16	1/4	0.59	0.73	0.67	0.89	0.81	0.13	0.35	0.51	5.00	10.30	0.56
PEG 3/8-5/16	3/8	5/16	0.69	0.81	0.73	1.00	0.98	0.17	0.47	0.83	7.00	20.70	1.12
PEG 1/2-3/8	1/2	3/8	0.83	0.93	0.81	1.16	1.16	0.17	0.55	1.18	9.00	28.30	1.53

PX

Branch Y



Unit : inch

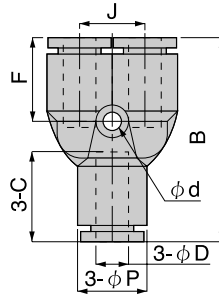
Model	Tube dia. φD(mm)	R	A	B	L	φP	C	J	H	φd	F	Weight (OZ)	Orifice φMM	Eff.a. mm2	CV
PX 4-M5	4	M5	0.14	1.50	1.36	0.39	0.59	0.43	0.39	0.13	0.57	0.47	1.80	1.50	0.08
PX 4-01	4	R1/8	0.31	1.61	1.50	0.39	0.59	0.43	0.39	0.13	0.57	0.59	3.00	4.20	0.23
PX 4-02	4	R1/4	0.43	1.73	1.50	0.39	0.59	0.43	0.55	0.13	0.57	0.91	3.00	4.20	0.23
PX 6-M5	6	M5	0.14	1.63	1.46	0.51	0.67	0.47	0.47	0.13	0.63	0.63	1.80	1.50	0.08
PX 6-M6	6	M6	0.18	1.67	1.50	0.51	0.67	0.47	0.47	0.13	0.63	0.63	3.00	6.50	0.35
PX 6-01	6	R1/8	0.31	1.75	1.59	0.51	0.67	0.47	0.47	0.13	0.63	0.71	4.60	10.00	0.54
PX 6-02	6	R1/4	0.43	1.87	1.63	0.51	0.67	0.47	0.55	0.13	0.63	0.98	4.60	10.00	0.54
PX 6-03	6	R3/8	0.47	1.95	1.69	0.51	0.67	0.47	0.67	0.13	0.63	1.54	4.60	10.00	0.54
PX 8-01	8	R1/8	0.31	1.93	1.77	0.59	0.73	0.55	0.55	0.13	0.69	0.92	6.00	16.50	0.89
PX 8-02	8	R1/4	0.43	2.05	1.81	0.59	0.73	0.55	0.55	0.13	0.69	1.16	6.00	16.50	0.89
PX 8-03	8	R3/8	0.47	2.11	1.85	0.59	0.73	0.55	0.67	0.13	0.69	1.67	6.00	16.50	0.89
PX 10-02	10	R1/4	0.43	2.30	2.07	0.71	0.81	0.71	0.67	0.18	0.79	1.69	7.50	30.00	1.63
PX 10-03	10	R3/8	0.47	2.34	2.09	0.71	0.81	0.71	0.67	0.18	0.79	2.03	7.50	30.00	1.63
PX 10-04	10	R1/2	0.59	2.46	2.15	0.71	0.81	0.71	0.83	0.18	0.79	2.87	7.50	30.00	1.63
PX 12-02	12	R1/4	0.43	2.50	2.26	0.83	0.92	0.79	0.83	0.18	0.89	2.50	8.00	37.00	2.01
PX 12-03	12	R3/8	0.47	2.54	2.28	0.83	0.92	0.79	0.83	0.18	0.89	2.54	9.00	37.00	2.01
PX 12-04	12	R1/2	0.59	2.66	2.34	0.83	0.92	0.79	0.83	0.18	0.89	3.13	9.00	37.00	2.01
PX 16-03	16	R3/8	0.42	2.69	2.46	0.86	0.86	0.84	0.77	0.16	0.79	3.36	11.00	54.50	2.95
PX 16-04	16	R1/2	0.53	2.83	2.55	0.86	0.86	0.84	0.77	0.16	0.79	3.50	13.00	59.00	3.20
PX 1/4-01	1/4	R1/8	0.31	1.75	1.59	0.51	0.67	0.47	0.47	0.13	0.63	1.71	4.60	10.00	0.54
PX 1/4-02	1/4	R1/4	0.43	1.87	1.63	0.51	0.67	0.47	0.55	0.13	0.63	0.98	4.60	10.00	0.54
PX 1/4-03	1/4	R3/8	0.47	1.95	1.69	0.51	0.67	0.47	0.67	0.13	0.63	1.54	4.60	10.00	0.54
PX 5/16-01	5/16	R1/8	0.31	1.93	1.77	0.59	0.73	0.55	0.55	0.13	0.69	0.92	6.00	16.50	0.89
PX 5/16-02	5/16	R1/4	0.43	2.05	1.81	0.59	0.73	0.55	0.55	0.13	0.69	1.16	6.00	16.50	0.89
PX 5/16-03	5/16	R3/8	0.47	2.11	1.85	0.59	0.73	0.55	0.67	0.13	0.69	1.67	6.00	16.50	0.89
PX 3/8-02	3/8	R1/4	0.43	2.30	2.07	0.71	0.81	0.71	0.67	0.18	0.79	1.69	7.50	30.00	1.63
PX 3/8-03	3/8	R3/8	0.47	2.34	2.09	0.71	0.81	0.71	0.67	0.18	0.79	2.03	7.50	30.00	1.63
PX 3/8-04	3/8	R1/2	0.59	2.46	2.15	0.71	0.81	0.71	0.83	0.18	0.79	2.87	7.50	30.00	1.63

Unit : inch

Model	Tube dia. φD	NPT	A	B	L	φP	C	J	H	φd	F	Weight (OZ)	Orifice φMM	Eff.a. mm2	CV
PX 5/32-U10U	5/32	10-32UNF	0.14	1.50	1.36	0.39	0.59	0.43	7/16	0.13	0.57	0.39	1.80	1.50	0.08
PX 5/32-N1U	5/32	1/8	0.31	1.61	1.50	0.39	0.59	0.43	7/16	0.13	0.57	0.51	3.00	4.20	0.23
PX 5/32-N2U	5/32	1/4	0.43	1.73	1.50	0.39	0.59	0.43	9/16	0.13	0.57	0.81	3.00	4.20	0.23
PX 3/16-U10U	3/16	10-32UNF	0.14	1.63	1.46	0.51	0.67	0.47	1/2	0.13	0.65	0.59	1.80	1.50	0.08
PX 3/16-N1U	3/16	1/8	0.31	1.67	1.59	0.51	0.67	0.47	1/2	0.13	0.65	0.66	4.20	5.80	0.31
PX 3/16-N2U	3/16	1/4	0.43	1.87	1.63	0.51	0.67	0.47	9/16	0.13	0.65	0.93	4.20	5.40	0.29
PX 3/16-N3U	3/16	3/8	0.47	1.95	1.69	0.51	0.67	0.47	11/16	0.13	0.65	1.42	4.20	5.30	0.29
PX 1/4-U10U	1/4	10-32UNF	0.14	1.63	1.46	0.51	0.67	0.47	1/2	0.13	0.65	0.57	1.80	1.50	0.08
PX 1/4-N1U	1/4	1/8	0.31	1.67	1.59	0.51	0.67	0.47	1/2	0.13	0.65	0.64	4.50	10.00	0.54
PX 1/4-N2U	1/4	1/4	0.43	1.87	1.63	0.51	0.67	0.47	9/16	0.13	0.65	0.91	4.50	10.00	0.54
PX 1/4-N3U	1/4	3/8	0.47	1.95	1.69	0.51	0.67	0.47	11/16	0.13	0.65	1.36	4.50	10.00	0.54
PX 5/16-N1U	5/16	1/8	0.31	1.93	1.77	0.59	0.71	0.55	9/16	0.18	0.69	0.83	6.00	16.50	0.89
PX 5/16-N2U	5/16	1/4	0.43	2.05	1.81	0.59	0.71	0.55	9/16	0.18	0.69	1.03	6.00	16.50	0.89
PX 5/16-N3U	5/16	3/8	0.47	2.07	1.85	0.59	0.71	0.55	9/16	0.18	0.69	1.51	6.00	16.50	0.89
PX 3/8-N2U	3/8	1/4	0.43	2.30	2.07	0.71	0.79	0.71	11/16	0.18	0.79	1.55	6.00	25.20	1.37
PX 3/8-N3U	3/8	3/8	0.47	2.34	2.09	0.71	0.79	0.71	11/16	0.18	0.79	1.83	6.50	25.90	1.40
PX 3/8-N4U	3/8	1/2	0.59	2.46	2.15	0.71	0.79	0.71	7/8	0.18	0.79	2.64	6.50	25.50	1.38
PX 1/2-N2U	1/2	1/4	0.43	2.50	2.26	0.83	0.93	0.79	7/8	0.18	0.89	2.25	8.00	37.00	2.01
PX 1/2-N3U	1/2	3/8	0.47	2.54	2.28	0.83	0.93	0.79	7/8	0.18	0.89	2.30	9.60	37.00	2.01
PX 1/2-N4U	1/2	1/2	0.59	2.66	2.34	0.83	0.93	0.79	7/8	0.18	0.89	2.84	9.60	37.00	2.01

PY

Union Y

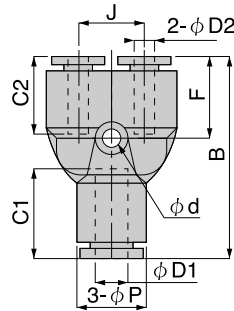


Unit : inch

Model	Tube dia. φD(mm)	B	φP	C	J	φd	F	Weight (OZ)	Orifice φMM	Eff.a. mm2	CV
PY 4	4	1.32	0.39	0.59	0.43	0.13	0.57	0.31	3.00	4.20	0.23
PY 6	6	1.50	0.51	0.67	0.47	0.13	0.63	0.41	4.60	10.00	0.54
PY 8	8	1.69	0.59	0.73	0.55	0.13	0.69	0.61	6.00	16.50	0.89
PY 10	10	1.93	0.71	0.81	0.71	0.18	0.79	1.00	7.50	27.00	1.46
PY 12	12	2.16	0.85	0.92	0.79	0.18	0.89	1.46	9.00	38.00	2.06
PY 16	16	2.48	0.96	0.96	0.94	0.18	0.89	1.55	13.00	56.50	3.06
PY 1/4	1/4	1.50	0.51	0.67	0.47	0.13	0.63	0.41	4.60	10.00	0.54
PY 5/16	5/16	1.69	0.59	0.73	0.55	0.13	0.67	0.61	6.00	16.50	0.89
PY 3/8	3/8	1.93	0.71	0.81	0.71	0.13	0.77	1.00	7.50	27.00	1.46
PY 5/32	5/32	1.32	0.39	0.59	0.43	0.13	0.57	0.27	3.70	4.20	0.23
PY 3/16	3/16	1.50	0.51	0.67	0.47	0.13	0.63	0.39	4.20	4.50	0.24
PY 1/2	1/2	2.17	0.85	0.93	0.79	0.18	0.89	1.24	9.60	38.00	2.06

PW

Different Diam. Union Y



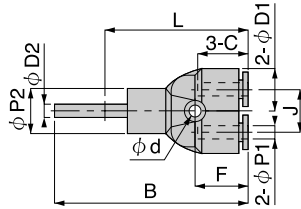
Unit : inch

Model	Tube dia. φD1(mm)	Tube dia. φD2(mm)	B	φP	C1	C2	φd	F	Weight (OZ)	Orifice φMM	Eff.a. mm2	CV
PW 6-4	6	4	1.48	0.51	0.67	0.59	0.13	0.61	0.37	3.00	4.20	0.23
PW 8-6	8	6	1.67	0.59	0.73	0.67	0.13	0.69	0.51	4.60	10.00	0.54
PW 10-8	10	8	1.91	0.71	0.81	0.73	0.17	0.77	0.81	6.00	16.50	0.89
PW 12-10	12	10	2.16	0.85	0.92	0.81	0.17	0.89	1.25	7.50	27.00	1.46
PW 1/4-4	1/4	4	1.48	0.51	0.67	0.59	0.13	0.59	0.37	3.00	4.20	0.23
PW 5/16-1/4	5/16	1/4	1.67	0.59	0.73	0.67	0.13	0.69	0.51	4.60	10.00	0.54
PW3/8-5/16	3/8	5/16	1.91	0.71	0.81	0.73	0.17	0.77	0.81	6.00	16.50	0.89

Unit : inch

Model	Tube dia. φD1	Tube dia. φD2	B	φP	C1	C2	φd	F	Weight (OZ)	Orifice φMM	Eff.a. mm2	CV
PW 3/16-5/32	3/16	5/32	1.48	0.51	0.67	0.59	0.13	0.61	0.37	3.00	3.80	0.21
PW 1/4-3/16	1/4	3/16	1.48	0.51	0.67	0.59	0.13	0.61	0.38	3.00	5.50	0.30
PW 1/4-5/32	1/4	5/32	1.50	0.51	0.67	0.67	0.13	0.63	0.36	3.00	4.50	0.24
PW 1/2-3/8	1/2	3/8	2.17	0.85	0.93	0.79	0.17	0.89	1.17	7.50	26.70	1.45

PYJ Branch Union Y



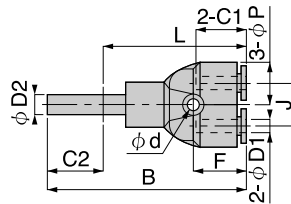
Unit : inch

Model	Tube dia. ϕD (mm)	Tube dia. ϕD (mm)	B	$\Phi P1$	$\Phi P2$	C	J	Φd	F	Weight (OZ)	Orifice ϕ MM	Eff.a. mm ²	CV
PYJ 4	4	4	1.93	0.39	0.39	0.59	0.43	0.13	0.55	0.23	2.50	2.00	0.11
PYJ 6	6	6	2.20	0.49	0.51	0.67	0.47	0.13	0.61	0.33	4.00	7.50	0.41
PYJ 8	8	8	2.42	0.51	0.59	0.71	0.55	0.13	0.67	0.48	6.00	16.50	0.89
PYJ 10	10	10	2.87	0.71	0.71	0.81	0.71	0.17	0.79	0.83	7.50	27.00	1.46
PYJ 12	12	13	3.27	0.83	0.83	0.92	0.79	0.17	0.89	1.23	9.00	42.00	2.28

Unit : inch

Model	Tube dia. $\phi D1$	Tube dia. $\phi D2$	B	$\Phi P1$	$\Phi P2$	C	Φd	F	Weight (OZ)	Orifice ϕ MM	Eff.a. mm ²	CV
PYJ 1/4	1/4	1/4	2.20	0.49	0.51	0.67	0.13	0.63	0.33	4.00	7.50	0.41
PYJ 5/16	5/16	5/16	2.40	0.59	0.59	0.73	0.13	0.69	0.46	6.00	16.50	0.89
PYJ 3/8	3/8	3/8	2.87	0.71	0.71	0.81	0.18	0.79	0.80	7.50	23.50	1.27

PWJ Different Diam. Branch Union Y



Unit : inch

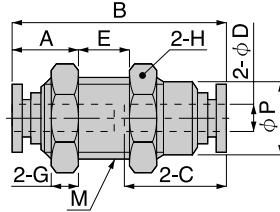
Model	Tube dia. ϕD (mm)	Tube dia. ϕD (mm)	B	$\Phi P1$	C1	C2	J	Φd	F	Weight (OZ)	Orifice ϕ MM	Eff.a. mm ²	CV
PWJ 6-4	6	4	2.03	0.39	0.67	0.59	0.43	0.13	0.55	0.25	2.00	4.20	0.23
PWJ 6-6	8	6	2.24	0.51	0.71	0.67	0.47	0.13	0.61	0.33	3.60	10.00	0.54
PWJ 10-8	10	8	2.48	0.59	0.81	0.73	0.55	0.13	0.67	0.51	6.00	16.50	0.89
PWJ 12-10	12	10	2.95	0.71	0.92	0.81	0.71	0.17	0.79	0.81	7.50	27.00	1.46

Unit : inch

Model	Tube dia. $\phi D1$	Tube dia. $\phi D2$	B	$\Phi P1$	C1	C2	J	Φd	F	Weight (OZ)	Orifice ϕ MM	Eff.a. mm ²	CV
PWJ 1/4-5/32	1/4	5/32	1.48	0.39	0.67	0.59	0.43	0.13	0.61	0.24	4.00	4.20	0.23
PWJ 5/16-1/4	5/16	1/4	1.67	0.5	0.71	0.67	0.47	0.13	0.69	0.33	6.00	10.00	0.54
PWJ 3/8-5/16	3/8	5/16	1.91	0.59	0.79	0.71	0.55	0.17	0.77	0.49	7.50	16.50	0.89

PM

Bulkhead Union



Unit : inch

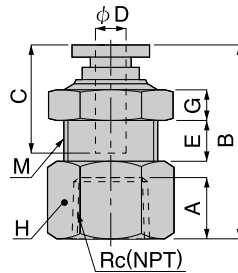
Model	Tube dia. φD(mm)	M	A	B	φP	C	E	H	Weight (OZ)	Orifice φMM	Eff.a. mm2	CV
PM 4	4	M12	0.37	1.22	0.43	0.59	0.28	0.55	0.37	3.00	5.30	0.29
PM 6	6	M14	0.39	1.38	0.49	0.67	0.39	0.67	0.56	4.60	12.50	0.68
PM 8	8	M16	0.41	1.48	0.57	0.71	0.35	0.75	0.69	6.00	20.00	1.08
PM 10	10	M20	0.45	1.69	0.73	0.49	0.51	0.94	1.32	8.00	35.00	1.90
PM 12	12	M22	0.49	1.85	0.81	0.92	0.71	1.06	1.97	11.00	71.00	3.85
PM 1/4	1/4	M14	0.37	1.38	0.49	0.67	0.39	0.67	0.55	4.60	12.50	0.68
PM 5/16	5/16	M16	0.39	1.48	0.57	0.71	0.35	0.75	0.69	6.00	20.00	1.08
PM3/8	3/8	M20	0.43	1.69	0.73	0.79	0.61	0.94	1.34	8.00	35.00	1.90

Unit : inch

Model	Tube dia. φD	M(UNF)	A	B	φP	C	E	H	Weight (OZ)	Orifice φMM	Eff.a. mm2	CV
PM 5/32U	5/32	1/2-20	0.37	1.22	0.43	0.59	0.28	9/16	0.40	3.00	5.30	0.29
PM 3/16U	3/16	9/16-18	0.39	1.38	0.49	0.67	0.39	11/16	0.69	4.00	6.10	0.33
PM 1/4U	1/4	9/16-18	0.39	1.38	0.49	0.67	0.39	11/16	0.68	4.60	12.50	0.68
PM 5/16U	5/16	5/8-18	0.41	1.48	0.56	0.71	0.35	3/4	0.81	6.00	20.00	1.08
PM 3/8U	3/8	7/8-14	0.45	1.69	0.73	0.79	0.51	1	1.71	8.00	29.40	1.59
PM 1/2U	1/2	7/8-14	0.49	1.85	0.80	0.93	0.71	1	1.76	11.00	71.00	3.85

PMF

Bulkhead Female Straight



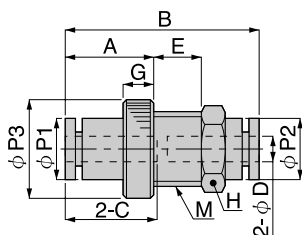
Unit : inch

Model	Tube dia. φD1(mm)	RC	M	A	B	C	E	H	Weight (OZ)	Orifice φMM	Eff.a. mm2	CV
PMF 4-01	4	RC1/8	M12	0.31	0.98	0.59	0.22	0.55	0.65	3.00	5.80	0.31
PMF 6-01	6	RC1/8	M14	0.31	1.08	0.67	0.30	0.55	1.04	6.00	13.80	0.75
PMF 6-02	6	RC1/4	M14	0.43	1.20	0.67	0.30	0.67	1.04	6.00	12.70	0.69
PMF 8-01	8	RC1/8	M16	0.31	1.14	0.71	0.43	0.67	1.36	8.00	22.50	1.22
PMF 8-02	8	RC1/4	M16	0.43	1.26	0.71	0.43	0.75	0.43	8.00	23.40	1.27
PMF 8-03	8	RC3/8	M16	0.47	1.30	0.71	0.43	0.75	1.20	8.00	22.30	1.21
PMF 10-02	10	RC1/4	M20	0.43	1.38	0.79	0.37	0.94	2.73	10.00	41.10	2.23
PMF 10-03	10	RC3/8	M20	0.47	1.42	0.79	0.37	0.94	2.57	10.00	40.00	2.17
PMF 12-03	12	RC3/8	M22	0.47	1.54	0.92	0.45	0.94	2.99	12.00	70.30	3.81
PMF 12-04	12	RC1/2	M22	0.59	1.65	0.92	0.45	0.94	2.82	12.00	70.10	3.80

Unit : inch

Model	Tube dia. φD1	NPT	M(UNF)	A	B	C	E	H	Weight (OZ)	Orifice φMM	Eff.a. mm2	CV
PMF 5/32-N1U	5/32	1/8	1/2-20	0.31	0.98	0.59	0.22	9/16	0.66	3.00	5.80	0.31
PMF 3/16-N1U	3/16	1/8	9/16-18	0.31	1.08	0.67	0.30	11/16	1.14	4.60	6.40	0.35
PMF 3/16-N2U	3/16	1/4	9/16-18	0.43	1.20	0.67	0.30	11/16	1.15	4.60	6.00	0.33
PMF 1/4-N1U	1/4	1/8	9/16-18	0.31	1.08	0.67	0.30	11/16	1.09	4.60	13.80	0.75
PMF 1/4-N2U	1/4	1/4	9/16-18	0.43	1.20	0.67	0.30	11/16	1.06	4.60	12.70	0.69
PMF 5/16-N1U	5/16	1/8	5/8-18	0.31	1.14	0.71	0.43	3/4	1.38	6.00	22.50	1.22
PMF 5/16-N2U	5/16	1/4	5/8-18	0.43	1.26	0.71	0.43	3/4	1.42	6.00	23.40	1.27
PMF 5/16-N3U	5/16	3/8	5/8-18	0.47	1.30	0.71	0.43	3/4	1.23	6.00	22.30	1.21
PMF 3/8-N2U	3/8	1/4	7/8-14	0.43	1.38	0.79	0.37	1	3.25	8.50	32.00	1.73
PMF 3/8-N3U	3/8	3/8	7/8-14	0.47	1.42	0.79	0.37	1	3.14	8.50	32.70	1.77
PMF 1/2-N3U	1/2	3/8	7/8-14	0.47	1.54	0.93	0.45	1	3.04	11.00	70.30	3.81
PMF 1/2-N4U	1/2	1/2	7/8-14	0.59	1.65	0.93	0.45	1	2.90	11.00	70.10	3.80

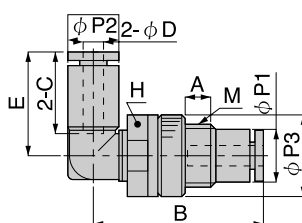
PMP Bulkhead Union P



Unit : inch

Model	Tube dia. ϕD (mm)	M	A	B	$\phi P1$	$\phi P2$	$\phi P3$	C	E	H	Weight (OZ)	Orifice ϕ MM	Eff.a. mm2	CV
PMP 4	4	M12	0.55	1.24	0.41	0.39	0.63	0.59	0.31	0.55	0.25	3.00	4.20	0.23
PMP 6	6	M14	0.59	1.40	0.51	0.49	0.75	0.67	0.43	0.67	0.33	5.00	10.70	0.58
PMP 8	8	M16	0.67	1.52	0.59	0.57	0.87	0.71	0.43	0.75	0.48	7.00	19.10	1.04
PMP 10	10	M20	0.69	1.69	0.71	0.69	1.08	0.79	0.51	0.94	0.81	8.00	39.60	2.15
PMP 12	12	M24	0.79	1.91	0.85	0.83	1.22	0.92	0.63	1.06	1.09	11.00	47.60	2.58
PMP 1/4	1/4	M14	0.59	1.40	0.49	0.49	0.75	0.67	0.43	0.67	0.33	5.00	13.20	0.72
PMP 5/16	5/16	M16	0.67	1.52	0.57	0.57	0.87	0.71	0.43	0.75	0.48	7.00	19.20	1.04
PMP 3/8	3/8	M20	0.69	1.69	0.69	0.69	1.08	0.79	0.51	0.94	0.81	8.00	32.50	1.76

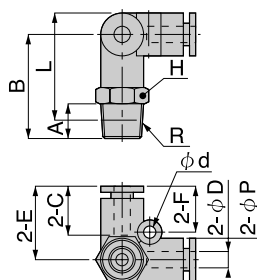
PML Bulkhead Union Elbow



Unit : inch

Model	Tube dia. ϕD (mm)	M	A	B	$\phi P1$	$\phi P2$	$\phi P3$	C	E	H	Weight (OZ)	Orifice ϕ MM	Eff.a. mm2	CV
PML 4	4	M12	0.24	1.30	0.39	0.39	0.63	0.59	0.77	0.55	0.33	2.90	3.40	0.18
PML 6	6	M14	0.35	1.50	0.49	0.49	0.75	0.67	0.91	0.67	0.49	3.50	9.40	0.51
PML 8	8	M16	0.35	1.63	0.57	0.57	0.87	0.71	0.92	0.75	0.72	6.20	19.30	1.05
PML 10	10	M20	0.43	1.87	0.69	0.69	1.08	0.79	1.16	0.94	1.27	8.00	28.10	1.52
PML 12	12	M24	0.55	2.15	0.83	0.83	1.22	0.92	1.28	1.06	1.83	9.20	37.20	2.02
PML 5/32														
PML 1/4	1/4	M14	0.35	1.50	0.49	0.49	0.75	0.67	0.91	0.67	0.49	3.50	10.80	0.59
PML 5/16	5/16	M16	0.35	1.63	0.57	0.57	0.87	0.71	0.92	0.75	0.72	6.20	19.30	1.05
PML 3/8	3/8	M20	0.43	1.87	0.69	0.69	1.08	0.79	1.16	0.94	1.27	8.00	22.80	1.24

PVX Tripod Elbow

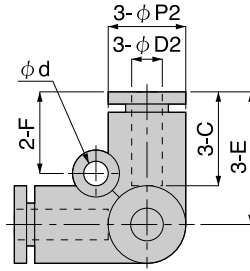


Unit : inch

Model	Tube dia. ϕD (mm)	R	A	B	L	ϕP	C	E	H	ϕd	F	Weight (OZ)	Orifice ϕ MM	Eff.a. mm2	CV
PVX 4-M5	4	M5	0.14	0.85	0.75	0.39	0.59	0.67	0.39	0.13	0.41	0.40	1.80	2.30	0.12
PVX 4-M6	4	M6	0.18	0.89	0.75	0.39	0.59	0.67	0.39	0.13	0.41	0.42	3.00	3.60	0.20
PVX 4-01	4	R1/8	0.31	0.96	0.81	0.39	0.59	0.67	0.39	0.13	0.41	0.51	3.00	4.00	0.22
PVX 4-02	4	R1/4	0.43	1.08	0.85	0.39	0.59	0.67	0.55	0.13	0.41	0.83	3.00	3.50	0.19
PVX 6-M5	6	M5	0.14	1.00	0.89	0.49	0.67	0.81	0.47	0.17	0.49	0.56	1.80	2.30	0.12
PVX 6-M6	6	M6	0.18	1.04	0.89	0.49	0.67	0.81	0.47	0.17	0.49	0.51	3.00	2.90	0.32
PVX 6-01	6	R1/8	0.31	1.12	0.96	0.49	0.67	0.81	0.47	0.17	0.49	0.63	4.00	8.50	0.46
PVX 6-02	6	R1/4	0.43	1.24	1.00	0.49	0.67	0.81	0.55	0.17	0.49	0.90	4.00	8.00	0.43
PVX 6-03	6	R3/8	0.47	1.30	1.04	0.49	0.67	0.81	0.67	0.17	0.49	1.37	4.00	8.40	0.46
PVX 8-01	8	R1/8	0.31	1.20	1.04	0.57	0.71	0.89	0.55	0.17	0.49	0.83	6.00	17.10	0.93
PVX 8-02	8	R1/4	0.43	1.32	1.08	0.57	0.71	0.89	0.55	0.17	0.49	1.04	6.00	17.50	0.95
PVX 8-03	8	R3/8	0.47	1.38	1.12	0.57	0.71	0.89	0.67	0.17	0.49	1.48	6.00	17.40	0.94
PVX 10-02	10	R1/4	0.43	1.50	1.26	0.69	0.79	1.04	0.67	0.17	0.57	1.53	8.00	31.50	1.71
PVX 10-03	10	R3/8	0.47	1.54	1.28	0.69	0.79	1.04	0.67	0.17	0.57	1.83	8.00	28.10	1.52
PVX 10-04	10	R1/2	0.59	1.65	1.34	0.69	0.79	1.04	0.83	0.17	0.57	2.57	8.00	24.30	1.32
PVX 12-02	12	R1/4	0.43	1.61	1.38	0.83	0.92	1.16	0.83	0.17	0.61	2.25	8.00	40.90	2.22
PVX 12-03	12	R3/8	0.47	1.65	1.40	0.83	0.92	1.16	0.83	0.17	0.61	2.27	10.00	45.00	2.44
PVX 12-04	12	R1/2	0.59	1.77	1.46	0.83	0.92	1.16	0.83	0.17	0.61	2.80	10.00	44.80	2.43

PVU

Tripod Union

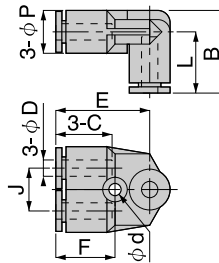


Unit : inch

Model	Tube dia. φD(mm)	φP	C	E	φd	F	Weight (OZ)	Orifice φMM	Eff.a. mm2	CV
PVU 4	4	0.39	0.59	0.67	0.13	0.41	0.26	3.00	3.70	0.20
PVU 6	6	0.49	0.67	0.81	0.17	0.49	0.37	4.60	8.30	0.45
PVU 8	8	0.57	0.71	0.89	0.17	0.49	0.53	6.00	16.00	0.87
PVU 10	10	0.71	0.79	1.04	0.17	0.57	0.90	8.00	30.20	1.64
PVU 12	12	0.85	0.92	1.16	0.17	0.61	1.27	10.00	40.20	2.18

PAU

Union A

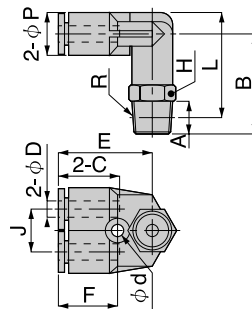


Unit : inch

Model	Tube dia. φD(mm)	B	φP	C	J	E	φd	F	Weight (OZ)	Orifice φMM	Eff.a. mm2	CV
PAU 4	4	0.67	0.39	0.59	0.43	0.91	0.13	0.57	0.28	3.00	2.50	0.14
PAU 6	6	0.79	0.49	0.67	0.47	1.04	0.17	0.61	0.40	4.60	7.20	0.39
PAU 8	8	0.91	0.57	0.71	0.55	1.16	0.17	0.67	0.58	6.00	16.30	0.88
PAU 10	10	1.00	0.71	0.79	0.71	1.34	0.17	0.75	0.95	8.00	27.90	1.51
PAU 12	12	1.16	0.85	0.92	0.79	1.40	0.17	0.81	1.37	10.00	40.00	2.17

PAX

Branch Elbow

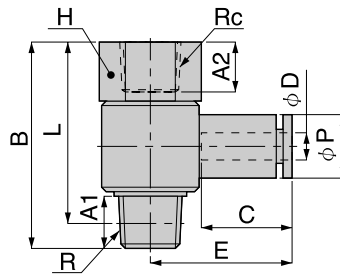


Unit : inch

Model	Tube dia. φD(mm)	R	A	B	L	φP	C	J	E	H	φd	F	Weight (OZ)	Orifice φMM	Eff.a. mm2	CV
PAX 4-M5	4	M5	0.14	0.85	0.71	0.39	0.59	0.43	0.91	0.39	0.13	0.57	0.44	1.80	2.20	0.12
PAX 4-M6	4	M6	0.18	0.89	0.71	0.39	0.59	0.43	0.91	0.39	0.13	0.57	0.44	3.00	2.50	0.14
PAX 4-01	4	R1/8	0.31	0.96	0.81	0.39	0.59	0.43	0.91	0.39	0.13	0.57	0.55	3.00	2.70	0.15
PAX 4-02	4	R1/4	0.43	1.08	0.85	0.39	0.59	0.43	0.91	0.55	0.13	0.57	0.84	3.00	2.50	0.14
PAX 6-M5	6	M5	0.14	0.98	0.85	0.49	0.67	0.47	1.04	0.47	0.17	0.61	0.60	1.80	2.20	0.12
PAX 6-M6	6	M6	0.18	1.02	0.85	0.49	0.67	0.47	1.04	0.47	0.17	0.61	0.62	3.00	6.40	0.35
PAX 6-01	6	R1/8	0.31	1.10	0.94	0.49	0.67	0.47	1.04	0.47	0.17	0.61	0.65	4.60	3.90	0.37
PAX 6-02	6	R1/4	0.43	1.22	0.98	0.49	0.67	0.47	1.04	0.55	0.17	0.61	0.93	4.60	6.60	0.36
PAX 6-03	6	R3/8	0.47	1.30	1.04	0.49	0.67	0.47	1.04	0.67	0.17	0.61	1.39	4.60	6.80	0.37
PAX 8-01	8	R1/8	0.31	1.22	1.06	0.57	0.71	0.55	1.16	0.55	0.17	0.67	0.88	6.00	14.60	0.79
PAX 8-02	8	R1/4	0.43	1.34	1.10	0.57	0.71	0.55	1.16	0.55	0.17	0.67	1.07	6.00	14.50	0.79
PAX 8-03	8	R3/8	0.47	1.42	1.16	0.57	0.71	0.55	1.16	0.67	0.17	0.67	1.55	6.00	15.00	0.81
PAX 10-02	10	R1/4	0.43	1.46	1.22	0.71	0.79	0.71	1.34	0.67	0.17	0.75	1.58	8.00	26.10	1.41
PAX 10-03	10	R3/8	0.47	1.50	1.24	0.71	0.79	0.71	1.34	0.67	0.17	0.75	1.88	8.00	27.20	1.47
PAX 10-04	10	R1/2	0.59	1.61	1.30	0.71	0.79	0.71	1.34	0.83	0.17	0.75	2.66	8.00	29.90	1.62
PAX 12-02	12	R1/4	0.43	1.61	1.38	0.85	0.92	0.79	1.40	0.83	0.17	0.81	2.32	10.00	38.20	2.07
PAX 12-03	12	R3/8	0.47	1.65	1.40	0.85	0.92	0.79	1.40	0.83	0.17	0.81	2.36	10.00	43.10	2.34
PAX 12-04	12	R1/2	0.59	1.77	1.46	0.85	0.92	0.79	1.40	0.83	0.17	0.81	2.92	10.00	42.10	2.28

PHF

Female Universal Elbow

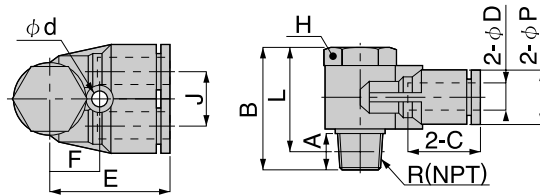


Unit : inch

Model	Tube dia. ϕD(mm)	R&RC	A1	A2	B	L	ϕP	C	E	H	Weight (OZ)	Orifice ϕMM	Eff.a. mm2	CV
PHF 4-M5	4	M5	0.14	0.20	0.79	0.24	0.39	0.59	0.83	0.31	0.28	1.80	1.70	0.09
PHF 4-01	4	R1/8	0.31	0.31	1.28	0.47	0.39	0.59	0.87	0.55	0.81	3.00	4.80	0.26
PHF 6-M5	6	M5	0.14	0.20	0.79	0.24	0.49	0.67	0.98	0.31	0.32	1.80	1.60	0.09
PHF 6-01	6	R1/8	0.31	0.31	1.28	0.47	0.49	0.65	0.98	0.55	0.84	4.60	8.40	0.46
PHF 6-02	6	R1/4	0.43	0.43	1.52	0.53	0.49	0.65	1.04	0.67	1.37	4.60	10.20	0.55
PHF 8-01	8	R1/8	0.31	0.31	1.28	0.47	0.59	0.69	1.02	0.55	0.90	5.00	10.30	0.56
PHF 8-02	8	R1/4	0.43	0.43	1.52	0.53	0.59	0.69	1.10	0.67	1.43	6.00	15.50	0.84
PHF 8-03	8	R3/8	0.47	0.47	1.75	0.61	0.59	0.69	1.18	0.83	2.29	6.00	18.90	1.02
PHF 10-02	10	R1/4	0.43	0.43	1.52	0.53	0.73	0.79	1.20	0.67	1.53	6.50	15.40	0.83
PHF 10-03	10	R3/8	0.47	0.47	1.75	0.61	0.73	0.79	1.28	0.83	2.41	8.00	24.90	1.35
PHF 12-03	12	R3/8	0.47	0.47	1.75	0.61	0.83	0.93	1.38	0.83	2.52	8.50	28.30	1.53
PHF 12-04	12	R1/2	0.51	0.59	2.05	0.65	0.83	0.93	1.50	0.94	3.70	10.00	42.60	2.31
PHF 1/4-M5	1/4	M5	0.14	0.20	0.79	0.26	0.49	0.67	0.98	0.31	0.32	1.80	1.60	0.09
PHF 1/4-01	1/4	R1/8	0.31	0.31	1.28	0.47	0.49	0.65	0.98	0.55	0.84	4.60	9.10	0.49
PHF 1/4-02	1/4	R1/4	0.43	0.43	1.52	0.53	0.49	0.65	1.04	0.67	1.37	4.60	11.60	0.63
PHF 5/16-01	5/16	R1/8	0.31	0.31	1.28	0.47	0.59	0.69	1.02	0.55	0.90	5.00	10.30	0.56
PHF 5/16-02	5/16	R1/4	0.43	0.43	1.52	0.53	0.59	0.69	1.10	0.67	1.43	6.00	15.50	0.84
PHF 5/16-03	5/16	R3/8	0.47	0.47	1.75	0.61	0.59	0.69	1.18	0.83	2.29	6.00	18.90	1.02
PHF 3/8-02	3/8	R1/4	0.43	0.43	1.52	0.53	0.73	0.79	1.20	0.67	1.53	6.50	18.10	0.98
PHF 3/8-03	3/8	R3/8	0.47	0.47	1.75	0.61	0.73	0.79	1.28	0.83	2.41	8.00	22.80	0.24

PA

Branch A



Unit : inch

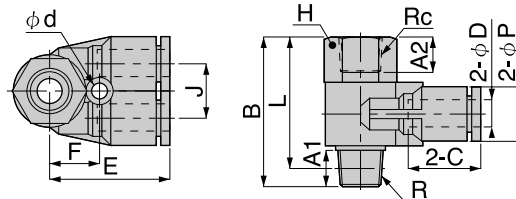
Model	Tube dia. ϕD(mm)	R	A	B	L	ϕP	C	J	E	H	ϕd	F	Weight (OZ)	Orifice ϕMM	Eff.a. mm2	CV
PA 4-M5	4	M5	0.14	0.67	0.22	0.39	0.59	0.39	0.79	0.31	-	-	0.37	1.80	1.90	0.10
PA 6-01	6	R1/8	0.31	1.06	0.43	0.49	0.65	0.47	1.02	0.55	0.13	0.41	0.96	4.60	8.30	0.45
PA 8-02	8	R1/4	0.43	1.24	0.49	0.57	0.69	0.55	1.14	0.67	0.13	0.49	1.63	6.00	15.50	0.84
PA 10-03	10	R3/8	0.47	1.42	0.57	0.69	0.79	0.67	1.32	0.83	0.17	0.59	2.74	8.00	25.20	1.37
PA 12-04	12	R1/2	0.59	1.57	0.69	0.83	0.92	0.79	1.48	0.94	0.17	0.67	4.01	10.00	39.70	2.15

Unit : inch

Model	Tube dia. ϕD	NPT	A	B	L	ϕP	C	J	E	H	ϕd	F	Weight (OZ)	Orifice ϕMM	Eff.a. mm2	CV
PA 5/32-U10U	3/32	10-32UNF	0.14	0.67	0.28	0.39	0.59	0.39	0.79	7/16	-	-	0.33	1.80	1.90	0.10
PA3/16-N1U	3/16	1/8	0.31	1.06	0.43	0.49	0.67	0.47	1.02	1/2	0.13	0.41	0.89	4.00	5.90	0.32
PA 1/4-N1U	1/4	1/4	0.31	1.06	0.43	0.49	0.67	0.47	1.02	1/2	0.13	0.41	0.87	4.60	8.30	0.45
PA 5/16-N2U	5/16	1/4	0.43	1.24	0.49	0.57	0.71	0.55	1.14	9/16	0.13	0.49	1.49	6.00	15.50	0.84
PA 3/8-N3U	3/8	3/8	0.47	1.42	0.57	0.69	0.79	0.67	1.32	11/16	0.17	0.37	2.54	8.00	25.20	1.37
PA 1/2-N4U	1/2	1/2	0.59	1.57	0.69	0.83	0.93	0.79	1.48	7/8	0.17	0.67	3.76	10.00	39.70	2.15

PAF

Female Branch A

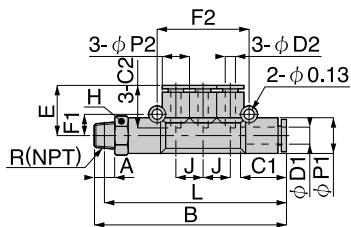


Unit : inch

Model	Tube dia. ϕD(mm)	R&RC	A1	A2	B	L	ϕP	C	J	E	H	Weight (OZ)	Orifice ϕMM	Eff.a. mm2	CV
PAF 4-M5	4	M5	0.14	0.16	0.79	0.24	0.39	0.59	-	0.79	0.31	0.35	1.80	1.70	0.09
PAF 6-01	6	R1/8	0.31	0.31	1.28	0.63	0.49	0.65	0.47	1.02	0.55	0.95	4.60	7.00	0.38
PAF 8-02	8	R1/4	0.43	0.43	1.52	0.77	0.57	0.69	0.55	1.14	0.67	1.58	6.00	13.80	0.75
PAF 10-03	10	R3/8	0.47	0.47	1.75	1.02	0.71	0.79	0.67	1.32	0.83	2.62	8.00	21.90	1.19
PAF 12-03	12	R3/8	0.47	0.47	2.01	1.75	0.83	0.92	0.79	1.48	0.94	4.80	9.30	38.70	2.10
PAF 12-04	12	R1/2	0.51	0.51	2.05	1.20	0.85	0.92	0.79	1.48	0.94	3.73	10.00	39.20	2.12

PKD

Branch Triple



Unit : inch

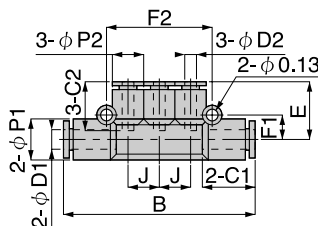
Model	Tube dia. φD(mm)	Tube dia. φD2(mm)	R	A	B	L	φP1	φP2	C1	C2	J	E	H	F1	F2	Weight (OZ)	Orifice φMM	Eff.a. mm2	CV
PKD 6-4-01	6	4	R1/8	0.31	2.70	2.54	0.51	0.39	0.67	0.59	0.39	0.73	0.47	0.31	1.34	0.81	3.00	5.00	0.27
PKD 8-4-02	8	4	R1/4	0.43	2.91	2.68	0.59	0.39	0.73	0.59	0.39	0.77	0.55	0.35	1.34	1.18	3.00	5.20	0.28
PKD 8-6-02	8	6	R1/4	0.43	3.19	2.95	0.59	0.51	0.73	0.67	0.47	0.79	0.55	0.35	1.57	1.28	4.60	9.60	0.52
PKD 10-8-03	10	8	R3/8	0.47	3.68	3.42	0.71	0.59	0.81	0.73	0.55	0.94	0.67	0.41	1.81	2.09	7.00	19.10	1.04

Unit : inch

Model	Tube dia. φD1	Tube dia. φD2	NPT	A	B	L	φP1	φP2	C1	C2	J	E	H	F1	F2	Weight (OZ)	Orifice φMM	Eff.a. mm2	CV
PKD 3/16-5/32-N1U	3/16	5/32	1/8	0.31	2.70	2.54	0.51	0.39	0.67	0.59	0.39	0.65	1/2	0.31	1.34	0.85	3.00	4.60	0.25
PKD 5/16-5/32-N2U	5/16	5/32	1/4	0.31	2.91	2.24	0.59	0.39	0.71	0.59	0.39	0.79	9/16	0.35	1.34	1.18	3.00	5.40	0.29
PKD 5/16-3/16-N2U	5/16	3/16	1/4	0.43	3.19	2.95	0.59	0.51	0.71	0.67	0.47	0.79	9/16	0.35	1.57	1.33	4.00	6.60	0.36
PKD 5/16-1/4-N2U	5/16	1/4	1/4	0.43	3.19	2.95	0.59	0.51	0.71	0.67	0.47	0.79	9/16	0.35	1.57	1.30	4.60	12.10	0.66
PKD 3/8-5/16-N3U	3/8	5/16	3/8	0.47	3.68	3.44	0.69	0.51	0.79	0.71	0.47	0.94	11/16	0.41	1.81	2.12	7.00	20.30	1.10

PKG

Different Diam. Triple



Unit : inch

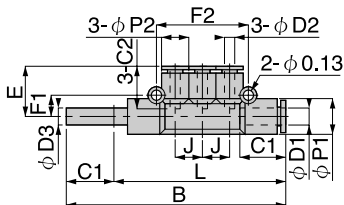
Model	Tube dia. φD1 (mm)	Tube dia. φD2 (mm)	B	φP1	φP2	C1	C2	J	E	F1	F2	Weight (OZ)	Orifice φMM	Eff.a. mm2	CV
PKG 6-4	6	4	2.36	0.51	0.39	0.67	0.59	0.39	0.73	0.31	1.34	0.56	3.00	5.00	0.27
PKG 8-4	8	4	2.46	0.59	0.39	0.71	0.59	0.39	0.75	0.35	1.34	0.67	3.00	6.00	0.33
PKG 8-6	8	6	2.74	0.59	0.51	0.71	0.67	0.47	0.83	0.35	1.57	0.81	4.60	10.10	0.55
PKG 10-6	10	6	3.15	0.71	0.59	0.79	0.67	0.55	0.94	0.41	1.81	1.09	4.60	11.20	0.61
PKG 10-8	10	8	3.15	0.71	0.59	0.79	0.71	0.55	0.92	0.41	1.81	1.16	7.00	19.10	1.04

Unit : inch

Model	Tube dia. φD1	Tube dia. φD2	B	φP1	φP2	C1	C2	J	E	F1	F2	Weight (OZ)	Orifice φMM	Eff.a. mm2	CV
PKG3/16-5/32	3/16	5/32	2.36	0.51	0.39	0.67	0.59	0.39	0.73	0.31	1.34	0.57	3.00	4.40	0.24
PKG5/16-5/32	5/16	5/32	2.46	0.59	0.39	0.67	0.59	0.39	0.75	0.35	1.34	0.68	3.00	6.00	0.33
PKG5/16-3/16	5/16	3/16	2.74	0.59	0.51	0.71	0.67	0.47	0.83	0.35	1.57	0.81	4.00	10.10	0.55
PKG5/16-1/4	5/16	1/4	2.74	0.59	0.51	0.71	0.67	0.47	0.83	0.35	1.57	0.78	4.60	10.10	0.55
PKG3/8-1/4	3/8	1/4	3.15	0.69	0.59	0.79	0.67	0.55	0.83	0.41	1.81	1.11	4.60	13.00	0.70
PKG3/8-5/16	3/8	5/16	3.15	0.69	0.59	0.79	0.71	0.55	0.93	0.41	1.81	1.17	7.00	23.60	1.28

PKJ

Branch Union Triple

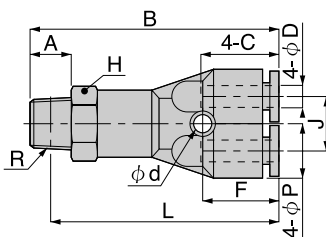


Unit : inch

Model	Tube dia. φD1(mm)	Tube dia. φD2(mm)	φD3	B	φP1	φP2	C1	C2	J	E	F1	F2	Weight (OZ)	Orifice φMM	Eff.a. mm2	CV
PKJ 6-4	6	4	4	3.05	0.51	0.39	0.67	0.59	0.39	0.73	0.31	1.34	0.51	3.00	4.00	0.22
PKJ 8-4	8	4	8	3.19	0.59	0.39	0.71	0.59	0.39	0.75	0.35	1.34	0.62	3.00	4.40	0.24
PKJ 8-6	8	6	8	3.46	0.59	0.51	0.71	0.67	0.47	0.79	0.35	1.57	0.74	4.60	10.00	0.54
PKJ 10-8	10	8	10	3.92	0.71	0.59	0.79	0.71	0.55	0.92	0.41	1.81	1.07	7.00	20.30	1.10

PRX

Branch Double Y



Unit : inch

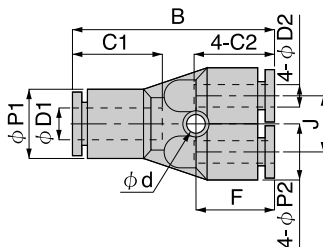
Model	Tube dia. φD(mm)	R	A	B	L	φP1	C	J	H	φd	F	Weight (OZ)	Orifice φMM	Eff.a. mm2	CV
PRX 4-01	4	R1/8	0.31	1.81	1.73	0.41	0.59	0.39	0.47	0.13	0.55	0.76	2.30	1.50	0.08
PRX 4-02	4	R1/4	0.43	1.93	1.69	0.41	0.59	0.39	0.55	0.13	0.55	1.04	2.30	1.40	0.08
PRX 6-01	6	R1/8	0.31	1.99	1.83	0.51	0.67	0.51	0.55	0.14	0.63	1.02	3.90	9.00	0.49

Unit : inch

Model	Tube dia. φD1	NPT	A	B	L	φP1	C	J	H	φd	F	Weight (OZ)	Orifice φMM	Eff.a. mm2	CV
PRX 5/32-N1U	5/32	1/8	0.31	1.81	1.65	0.41	0.59	0.39	1/2	3.20	0.55	0.76	3.00	1.50	0.08
PRX 5/32-N2U	5/32	1/4	0.43	1.93	1.69	0.41	0.59	0.39	9/16	3.20	0.55	1.03	3.00	1.40	0.08
PRX 3/16-N1U	3/16	1/8	0.31	1.99	1.83	0.51	0.67	0.51	9/16	3.20	0.63	1.05	4.60	5.40	0.29
PRX 1/4-N1U	1/4	1/8	0.31	1.99	1.83	0.51	0.67	0.51	1/2	3.20	0.63	1.02	4.60	9.00	0.49

PRG

Different Diam. Double Y



Unit : inch

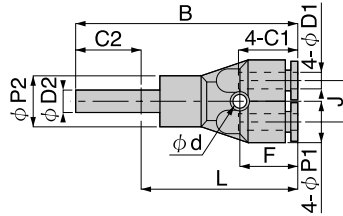
Model	Tube dia. φD1(mm)	Tube dia. φD2(mm)	B	φP1	φP2	C1	C2	J	φd	F	Weight (OZ)	Orifice φMM	Eff.a. mm2	CV
PRG 6-4	6	4	1.48	0.51	0.41	0.67	0.59	0.39	0.13	0.55	0.49	2.30	1.50	0.08
PRG 8-6	8	6	1.67	0.57	0.51	0.71	0.67	0.51	0.14	0.63	0.72	4.00	8.20	0.44

Unit : inch

Model	Tube dia. φD1	Tube dia. φD2	B	φP1	φP2	C1	C2	J	φd	F	Weight (OZ)	Orifice φMM	Eff.a. mm2	CV
PRG 3/16-5/32	3/16	5/32	1.48	0.51	0.41	0.67	0.59	0.51	0.41	0.55	0.48	3.00	1.50	0.08
PRG 1/4-5/32	1/4	5/32	1.48	0.51	0.41	0.67	0.59	0.51	0.41	0.55	0.48	3.00	1.50	0.08
PRG 5/16-1/4	5/16	1/4	1.67	0.57	0.51	0.71	0.67	0.55	0.51	0.63	0.70	4.60	8.20	0.44

PRJ

Branch Union Double Y

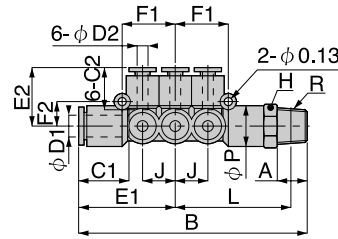


Unit : inch

Model	Tube dia. φD1(mm)	Tube dia. φD2(mm)	B	φP1	φP2	C1	C2	J	φd	F	Weight (OZ)	Orifice φMM	Eff.a. mm2	CV
PRJ 6-4	6	4	2.18	0.51	0.41	0.67	0.59	0.39	0.13	0.55	0.51	4.00	1.50	0.08
PRJ 8-6	8	6	2.42	0.55	0.51	0.71	0.67	0.51	0.14	0.63	0.75	6.00	7.10	0.38

PKVD

Branch Triple Double

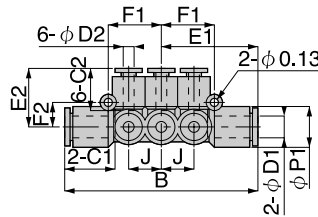


Unit : inch

Model	Tube dia. φD1(mm)	Tube dia. φD2(mm)	R	A	B	L	φP1	C1	C2	J	E1	E2	H	F1	F2	Weight (OZ)	Orifice φMM	Eff.a. mm2	CV
PKVD 8-4-02	8	4	R1/8	0.43	3.19	1.57	0.59	0.71	0.63	0.47	1.38	0.83	0.55	0.79	9.00	1.57	3.00	4.50	0.24
PKVD 8-4-03	8	4	R3/8	0.47	3.25	1.63	0.59	0.71	0.63	0.47	1.38	0.83	0.67	0.79	9.00	2.06	3.00	4.60	0.25
PKVD 8-6-02	8	6	R1/4	0.43	3.19	1.57	0.59	0.71	0.67	0.47	1.38	0.85	0.55	0.79	9.00	1.62	4.60	10.20	0.55
PKVD 8-6-03	8	6	R3/8	0.47	3.25	1.63	0.59	0.71	0.67	0.47	1.38	0.85	0.67	0.79	9.00	2.09	4.60	10.30	0.56
PKVD 10-6-03	10	6	R3/8	0.47	3.68	1.83	0.69	0.79	0.67	0.55	1.59	0.94	0.67	0.91	10.50	2.46	4.60	10.60	0.57
PKVD 10-6-04	10	6	R1/2	0.59	3.80	1.89	0.69	0.79	0.67	0.55	1.59	0.94	0.83	0.91	10.50	3.20	4.60	11.10	0.60
PKVD 10-8-03	10	8	R3/8	0.47	3.68	1.83	0.69	0.79	0.71	0.55	1.59	0.96	0.67	0.91	10.50	2.57	7.00	20.60	1.12
PKVD 10-8-04	10	8	R1/2	0.59	3.80	1.89	0.69	0.79	0.71	0.55	1.59	0.96	0.83	0.91	10.50	3.31	7.00	19.40	1.05

PKVG

Different Diam. Triple Double



Unit : inch

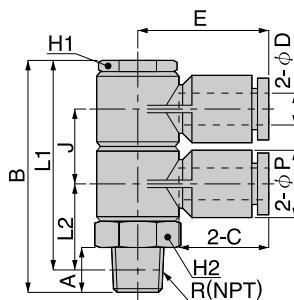
Model	Tube dia. φD1(mm)	Tube dia. φD2(mm)	B	φP1	φP2	C1	C2	J	E1	E2	F1	F2	Weight (OZ)	Orifice φMM	Eff.a. mm2	CV
PKVG 8-4	8	4	2.76	0.59	0.51	0.71	0.59	0.47	1.38	0.83	0.79	0.35	1.22	3.00	4.50	0.24
PKVG 8-6	8	6	2.76	0.59	0.51	0.71	0.67	0.47	1.38	0.85	0.79	0.35	1.26	4.60	10.30	0.56
PKVG 10-6	10	6	3.17	0.69	0.59	0.79	0.67	0.55	1.59	0.94	0.91	0.41	1.73	4.60	10.70	0.58
PKVG 10-8	10	8	3.17	0.69	0.59	0.79	0.71	0.55	1.59	0.94	0.91	0.41	1.87	7.00	19.60	1.06

Unit : inch

Model	Tube dia. φD1	Tube dia. φD2	B	φP1	φP2	C1	C2	J	E1	E2	F1	F2	Weight (OZ)	Orifice φMM	Eff.a. mm2	CV
PKVG 5/16-5/32	5/16	5/32	2.76	0.59	0.51	0.71	0.59	0.47	1.37	0.83	0.79	0.35	1.09	3.00	4.50	0.24
PKVG 5/16-3/16	5/16	3/16	2.76	0.59	0.51	0.71	0.67	0.47	1.37	0.85	0.79	0.35	1.17	4.00	6.00	0.33
PKVG 5/16-1/4	5/16	1/4	2.76	0.59	0.51	0.71	0.67	0.47	1.37	0.85	0.79	0.35	1.11	4.60	10.30	0.56
PKVG 3/8-3/16	3/8	3/16	3.17	0.69	0.59	0.79	0.67	0.67	1.58	0.94	0.90	0.41	1.59	4.00	6.40	0.35
PKVG 3/8-1/4	3/8	1/4	3.17	0.69	0.59	0.79	0.67	0.67	1.58	0.94	0.90	0.41	1.53	4.60	13.50	0.73
PKVG 3/8-5/16	3/8	5/16	3.17	0.69	0.59	0.79	0.71	0.67	1.58	0.94	0.90	0.41	1.67	7.00	25.50	1.38

PHW

Double Universal Elbow



Unit : inch

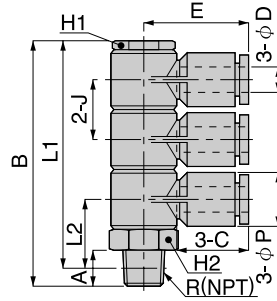
Model	Tube dia. φD(mm)	R	A	B	L	φP	C	J	E	H1	H2	Weight (OZ)	Orifice φMM	Eff.a. mm2	CV
PHW 4-01	4	R1/8	0.31	1.69	1.54	0.39	0.59	0.55	0.89	0.55	0.55	1.00	3.00	5.10	0.28
PHW 4-02	4	R1/4	0.43	1.81	1.57	0.39	0.59	0.55	0.89	0.55	0.55	1.09	3.00	4.40	0.24
PHW 4-03	4	R3/8	0.47	1.89	1.63	0.39	0.59	0.55	0.89	0.55	0.67	1.46	3.00	4.50	0.24
PHW 6-01	6	R1/8	0.31	1.69	1.54	0.49	0.67	0.55	0.96	0.55	0.55	1.07	4.60	9.30	0.50
PHW 6-02	6	R1/4	0.43	1.81	1.57	0.49	0.67	0.55	0.96	0.55	0.55	1.16	4.60	9.30	0.50
PHW 6-03	6	R3/8	0.47	1.89	1.63	0.49	0.67	0.55	0.96	0.55	0.67	1.53	4.60	9.50	0.51
PHW 8-01	8	R1/8	0.31	1.81	1.65	0.57	0.73	0.59	1.12	0.67	0.67	1.57	5.10	14.20	0.77
PHW 8-02	8	R1/4	0.43	1.93	1.69	0.57	0.73	0.59	1.12	0.67	0.67	1.67	5.10	15.30	0.83
PHW 8-03	8	R3/8	0.47	0.97	1.71	0.57	0.73	0.59	1.12	0.67	0.67	1.85	5.10	15.00	0.81
PHW 8-04	8	R1/2	0.59	2.16	1.85	0.57	0.73	0.59	1.12	0.67	0.87	2.66	5.10	15.10	0.82
PHW 10-02	10	R1/4	0.43	2.26	2.03	0.71	0.81	0.71	1.30	0.87	0.87	2.99	6.50	21.60	1.17
PHW 10-03	10	R3/8	0.47	2.30	2.05	0.71	0.81	0.71	1.30	0.87	0.87	3.20	6.50	23.20	1.26
PHW 10-04	10	R1/2	0.59	2.42	2.11	0.71	0.81	0.71	1.30	0.87	0.87	3.48	6.50	23.30	1.26
PHW 12-02	12	R1/4	0.43	2.64	2.40	0.83	0.92	0.83	1.52	1.06	1.06	5.14	7.70	30.00	1.63
PHW 12-03	12	R3/8	0.47	2.68	2.42	0.83	0.92	0.83	1.52	1.06	1.06	5.35	7.70	31.40	1.70
PHW 12-04	12	R1/2	0.59	2.79	2.48	0.83	0.92	0.83	1.52	1.06	1.06	5.60	7.70	30.80	1.67
PHW 1/4-01	1/4	R1/8	0.31	1.69	1.54	0.49	0.67	0.55	0.96	0.55	0.55	1.07	4.60	15.30	0.83
PHW 1/4-02	1/4	R1/4	0.43	1.81	1.57	0.49	0.67	0.55	0.96	0.55	0.55	1.16	4.60	15.00	0.81
PHW 1/4-03	1/4	R3/8	0.47	1.89	1.63	0.49	0.67	0.55	0.96	0.55	0.67	1.53	4.60	15.10	0.82
PHW 5/16-02	5/16	R1/4	0.43	1.93	1.69	0.57	0.73	0.59	1.12	0.67	0.67	1.67	5.10	10.10	0.55
PHW 5/16-03	5/16	R3/8	0.47	1.97	1.71	0.57	0.73	0.59	1.12	0.67	0.67	1.85	5.10	9.90	0.54
PHW 5/16-04	5/16	R1/2	0.59	2.16	1.85	0.57	0.73	0.59	1.12	0.67	0.87	2.66	5.10	10.20	0.55
PHW 3/8-02	3/8	R1/4	0.43	2.26	2.03	0.71	0.81	0.71	1.30	0.87	0.87	3.01	6.50	21.40	1.16
PHW 3/8-03	3/8	R3/8	0.47	2.30	2.05	0.71	0.81	0.71	1.30	0.87	0.87	3.20	6.50	21.70	1.18
PHW 3/8-04	3/8	R1/2	0.59	2.42	2.11	0.71	0.81	0.71	1.30	0.87	0.87	3.48	6.50	22.60	1.22

Unit : inch

Model	Tube dia. φD	NPT	A	B	L	φP	C	J	E	H1	H2	Weight (OZ)	Orifice φMM	Eff.a. mm2	CV
PHW 5/32-N1U	5/32	1/8	0.31	1.69	1.54	0.39	0.59	0.55	0.89	0.55	9/16	1.00	3.00	5.10	0.28
PHW 5/32-N2U	5/32	1/4	0.43	1.81	1.57	0.39	0.59	0.55	0.89	0.55	9/16	1.11	3.00	4.40	0.24
PHW 1/4-N1U	1/4	1/8	0.31	1.69	1.54	0.49	0.67	0.55	0.96	0.55	9/16	1.06	4.60	10.00	0.54
PHW 1/4-N2U	1/4	1/4	0.43	1.81	1.57	0.49	0.67	0.55	0.96	0.55	9/16	1.17	4.60	9.70	0.53
PHW 1/4-N3U	1/4	3/8	0.47	1.89	1.63	0.49	0.67	0.55	0.96	0.55	11/16	1.54	4.60	9.90	0.54
PHW 5/16-N2U	5/16	1/4	0.43	1.93	1.69	0.57	0.71	0.59	1.12	0.67	11/16	1.70	6.00	14.20	0.77
PHW 5/16-N3U	5/16	3/8	0.47	1.97	1.71	0.57	0.71	0.59	1.12	0.67	11/16	1.89	6.00	14.60	0.79
PHW 5/16-N4U	5/16	1/2	0.59	2.17	1.85	0.57	0.71	0.59	1.12	0.67	7/8	2.65	6.00	14.30	0.78
PHW 3/8-N2U	3/8	1/4	0.43	2.26	2.03	0.71	0.79	0.71	1.30	0.87	7/8	2.98	7.50	21.60	1.17
PHW 3/8-N3U	3/8	3/8	0.47	2.30	2.05	0.71	0.79	0.71	1.30	0.87	7/8	3.20	7.50	21.70	1.18
PHW 3/8-N4U	3/8	1/2	0.59	2.42	2.11	0.71	0.79	0.71	1.30	0.87	7/8	3.45	7.50	22.60	1.22

PHT

Triple Universal Elbow



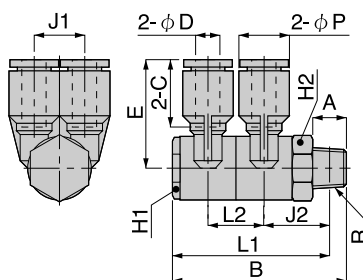
Unit : inch

Model	Tube dia. φD(mm)	R	A	B	L	φP	C	J	E	H1	H2	Weight (OZ)	Orifice φMM	Eff.a. mm2	CV
PHT 4-01	4	R1/8	0.31	2.24	2.09	0.39	0.59	0.55	0.89	0.55	0.55	1.28	3.00	4.70	0.25
PHT 4-02	4	R1/4	0.43	2.36	2.13	0.39	0.59	0.55	0.89	0.55	0.55	1.39	3.00	4.30	0.23
PHT 4-03	4	R3/8	0.47	2.44	2.18	0.39	0.59	0.55	0.89	0.55	0.67	1.74	3.00	4.20	0.23
PHT 6-01	6	R1/8	0.31	2.24	2.09	0.49	0.67	0.55	0.96	0.55	0.55	1.37	4.60	9.60	0.52
PHT 6-02	6	R1/4	0.43	2.36	2.13	0.49	0.67	0.55	0.96	0.55	0.55	1.48	4.60	9.70	0.53
PHT 6-03	6	R3/8	0.47	2.44	2.18	0.49	0.67	0.55	0.96	0.55	0.67	1.85	4.60	9.50	0.51
PHT 8-01	8	R1/8	0.31	2.40	2.24	0.57	0.73	0.59	1.12	0.67	0.67	2.02	5.10	14.30	0.78
PHT 8-02	8	R1/4	0.43	2.52	2.28	0.57	0.73	0.59	1.12	0.67	0.67	2.13	5.10	15.50	0.84
PHT 8-03	8	R3/8	0.47	2.56	2.30	0.57	0.73	0.59	1.12	0.67	0.67	2.29	5.10	15.10	0.82
PHT 8-04	8	R1/2	0.59	2.76	2.44	0.57	0.73	0.59	1.12	0.67	0.87	3.12	5.10	15.10	0.82
PHT 10-02	10	R1/4	0.43	2.97	2.74	0.71	0.81	0.71	1.30	0.87	0.87	3.78	6.50	21.90	1.19
PHT 10-03	10	R3/8	0.47	3.01	2.76	0.71	0.81	0.71	1.30	0.87	0.87	4.01	6.50	22.70	1.23
PHT 10-04	10	R1/2	0.59	3.13	2.81	0.71	0.81	0.71	1.30	0.87	0.87	4.28	6.50	22.60	1.22
PHT 12-02	12	R1/4	0.43	3.46	3.23	0.83	0.92	0.83	1.52	1.06	1.06	6.37	7.70	30.30	1.64
PHT 12-03	12	R3/8	0.47	3.50	3.25	0.83	0.92	0.83	1.52	1.06	1.06	6.58	7.70	30.60	1.66
PHT 12-04	12	R1/2	0.59	3.62	3.31	0.83	0.92	0.83	1.52	1.06	1.06	6.86	7.70	31.50	1.71
PHT 1/4-01	1/4	R1/8	0.31	2.24	2.09	0.49	0.67	0.55	0.96	0.55	0.55	1.37	4.60	9.80	0.53
PHT 1/4-02	1/4	R1/4	0.43	2.36	2.13	0.49	0.67	0.55	0.96	0.55	0.55	1.48	4.60	10.00	0.54
PHT 1/4-03	1/4	R3/8	0.47	2.44	2.18	0.49	0.67	0.55	0.96	0.55	0.67	1.85	4.60	9.80	0.53
PHT 5/16-02	5/16	R1/4	0.43	2.52	2.28	0.57	0.73	0.59	1.12	0.67	0.67	2.13	5.10	15.50	0.84
PHT 5/16-03	5/16	R3/8	0.47	2.56	2.30	0.57	0.73	0.59	1.12	0.67	0.67	2.29	5.10	15.10	0.82
PHT 5/16-04	5/16	R1/2	0.59	2.76	2.44	0.57	0.73	0.59	1.12	0.67	0.87	3.12	5.10	15.10	0.82
PHT 3/8-02	3/8	R1/4	0.43	2.97	2.74	0.71	0.81	0.71	1.30	0.87	0.87	3.80	6.50	20.90	1.13
PHT 3/8-03	3/8	R3/8	0.47	3.01	2.76	0.71	0.81	0.71	1.30	0.87	0.87	4.01	6.50	22.00	1.19
PHT 3/8-04	3/8	R1/2	0.59	3.13	2.81	0.71	0.81	0.71	1.30	0.87	0.87	4.28	6.50	22.30	1.21

Unit : inch

Model	Tube dia. φD	NPT	A	B	L	φP	C	J	E	H1	H2	Weight (OZ)	Orifice φMM	Eff.a. mm2	CV
PHT 5/32-N1U	5/32	1/8	0.31	2.24	2.09	0.39	0.59	0.55	0.89	0.55	9/16	36.60	3.00	4.70	0.25
PHT 5/32-N2U	5/32	1/4	0.43	2.36	2.13	0.39	0.59	0.55	0.89	0.55	9/16	39.50	3.00	4.30	0.23
PHT 1/4-N1U	1/4	1/8	0.31	2.24	2.09	0.49	0.67	0.55	0.96	0.55	9/16	39.00	4.60	9.80	0.53
PHT 1/4-N2U	1/4	1/4	0.43	2.36	2.13	0.49	0.67	0.55	0.96	0.55	9/16	41.70	4.60	10.00	0.54
PHT 1/4-N3U	1/4	3/8	0.47	2.44	2.13	0.49	0.67	0.55	0.96	0.55	11/16	52.90	4.60	9.80	0.53
PHT 5/16-N2U	5/16	1/4	0.43	2.52	2.19	0.57	0.71	0.59	1.12	0.67	11/16	61.40	6.00	15.50	0.84
PHT 5/16-N3U	5/16	3/8	0.47	2.56	2.24	0.57	0.71	0.59	1.12	0.67	11/16	66.90	6.00	15.10	0.82
PHT 5/16-N4U	5/16	1/2	0.59	2.76	2.28	0.57	0.71	0.59	1.12	0.67	7/8	88.50	6.00	15.10	0.82
PHT 3/8-N2U	3/8	1/4	0.43	2.97	2.74	0.71	0.79	0.71	1.30	0.87	7/8	108.00	7.50	21.10	1.14
PHT 3/8-N3U	3/8	3/8	0.47	3.01	2.76	0.71	0.79	0.71	1.30	0.87	7/8	113.40	7.50	21.60	1.17
PHT 3/8-N4U	3/8	1/2	0.59	3.13	2.81	0.71	0.79	0.71	1.30	0.87	7/8	121.30	7.50	21.50	1.17

PAW Double Branch A

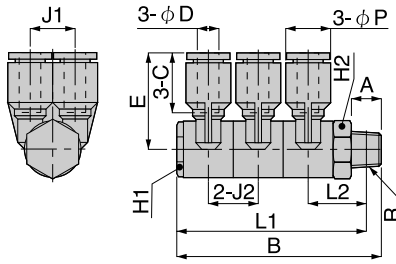


Unit : inch

Model	Tube dia. φD(mm)	R	A	B	L	φP	C	J1	J2	E	H1	H2	Weight (OZ)	Orifice φMM	Eff.a. mm ²	CV
PAW 4-01	4	R1/8	0.31	1.69	1.54	0.39	0.59	0.39	0.55	0.89	0.55	0.55	1.16	3.00	4.30	0.23
PAW 4-02	4	R1/4	0.43	1.81	1.57	0.39	0.59	0.39	0.55	0.89	0.55	0.55	1.27	3.00	4.30	0.23
PAW 4-03	4	R3/8	0.47	1.89	1.63	0.39	0.59	0.39	0.55	0.89	0.55	0.67	1.62	3.00	4.20	0.23
PAW 6-01	6	R1/8	0.31	1.69	1.54	0.49	0.67	0.47	0.55	1.04	0.55	0.55	1.32	4.60	6.90	0.37
PAW 6-02	6	R1/4	0.43	1.81	1.57	0.49	0.67	0.47	0.55	1.04	0.55	0.55	1.41	4.60	7.00	0.38
PAW 6-03	6	R3/8	0.47	1.89	1.63	0.49	0.67	0.47	0.55	1.04	0.55	0.67	1.78	4.60	6.90	0.37
PAW 8-01	8	R1/8	0.31	1.81	1.65	0.57	0.73	0.55	0.59	1.16	0.67	0.67	1.88	5.10	12.40	0.67
PAW 8-02	8	R1/4	0.43	1.93	1.69	0.57	0.73	0.55	0.59	1.16	0.67	0.67	2.01	5.10	13.90	0.75
PAW 8-03	8	R3/8	0.47	1.97	1.71	0.57	0.73	0.55	0.59	1.16	0.67	0.67	2.18	5.10	14.00	0.76
PAW 8-04	8	R1/2	0.59	2.16	1.85	0.57	0.73	0.55	0.59	1.16	0.67	0.87	2.97	5.10	14.00	0.76
PAW 10-02	10	R1/4	0.43	2.26	2.03	0.69	0.81	0.67	0.71	1.34	0.87	0.87	3.45	6.50	21.60	1.17
PAW 10-03	10	R3/8	0.47	2.30	2.05	0.69	0.81	0.67	0.71	1.34	0.87	0.87	3.68	6.50	21.30	1.15
PAW 10-04	10	R1/2	0.59	2.42	2.11	0.69	0.81	0.67	0.71	1.34	0.87	0.87	3.96	6.50	22.20	1.20
PAW 12-02	12	R1/4	0.43	2.64	2.40	0.83	0.92	0.79	0.83	1.48	1.06	1.06	5.76	7.70	43.20	2.34
PAW 12-03	12	R3/8	0.47	2.68	2.42	0.83	0.92	0.79	0.83	1.48	1.06	1.06	5.95	7.70	44.40	2.41
PAW 12-04	12	R1/2	0.59	2.79	2.48	0.83	0.92	0.79	0.83	1.48	1.06	1.06	6.23	7.70	45.40	2.46
PAW 1/4-01	1/4	R1/8	0.31	1.69	1.54	0.49	0.67	0.47	0.55	1.04	0.55	0.55	1.32	4.60	7.00	0.38
PAW 1/4-02	1/4	R1/4	0.43	1.81	1.57	0.49	0.67	0.47	0.55	1.04	0.55	0.55	1.41	4.60	7.00	0.38
PAW 1/4-03	1/4	R3/8	0.47	1.89	1.63	0.49	0.67	0.47	0.55	1.04	0.55	0.67	1.78	4.60	7.10	0.38
PAW 5/16-02	5/16	R1/4	0.43	1.93	1.69	0.57	0.73	0.55	0.59	1.16	0.67	0.67	2.01	5.10	13.90	0.75
PAW 5/16-03	5/16	R3/8	0.47	1.97	1.71	0.57	0.73	0.55	0.59	1.16	0.67	0.67	2.18	5.10	14.00	0.76
PAW 5/16-04	5/16	R1/2	0.59	2.16	1.85	0.57	0.73	0.55	0.59	1.16	0.67	0.87	2.97	5.10	14.00	0.76
PAW 3/8-02	3/8	R1/4	0.43	2.26	2.03	0.69	0.81	0.67	0.71	1.34	0.87	0.87	3.48	6.50	20.40	1.11
PAW 3/8-03	3/8	R3/8	0.47	2.30	2.05	0.69	0.81	0.67	0.71	1.34	0.87	0.87	3.68	6.50	21.10	1.14
PAW 3/8-04	3/8	R1/2	0.59	2.42	2.11	0.69	0.81	0.67	0.71	1.34	0.87	0.87	3.96	6.50	20.70	1.12
PAW 5/32-N1U																
PAW 5/32-N2U																
PAW 1/4-N1U																
PAW 1/4-N2U																
PAW 1/4-N3U																
PAW 5/16-N2U																
PAW 5/16-N3U																
PAW 5/16-N4U																
PAW 3/8-N2U																
PAW 3/8-N3U																
PAW 3/8-N4U																

PAT

Triple Branch A

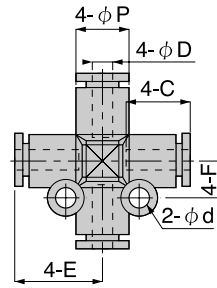


Unit : inch

Model	Tube dia. φD(mm)	R	A	B	L	φP	C	J1	J2	E	H1	H2	Weight (OZ)	Orifice φMM	Eff.a. mm ²	CV
PAT 4-01	4	R1/8	0.31	2.24	2.09	0.39	0.59	0.39	0.55	0.89	0.55	0.55	1.53	3.00	4.80	0.26
PAT 4-02	4	R1/4	0.43	2.36	2.13	0.39	0.59	0.39	0.55	0.89	0.55	0.55	1.64	3.00	4.40	0.24
PAT 4-03	4	R3/8	0.47	2.44	2.18	0.39	0.59	0.39	0.55	0.89	0.55	0.67	1.99	3.00	4.20	0.23
PAT 6-01	6	R1/8	0.31	2.24	2.09	0.49	0.67	0.47	0.55	1.04	0.55	0.55	1.74	4.60	6.70	0.36
PAT 6-02	6	R1/4	0.43	2.36	2.13	0.49	0.67	0.47	0.55	1.04	0.55	0.55	1.85	4.60	6.80	0.37
PAT 6-03	6	R3/8	0.47	2.44	2.18	0.49	0.67	0.47	0.55	1.04	0.55	0.67	2.20	4.60	6.80	0.37
PAT 8-01	8	R1/8	0.31	2.40	2.24	0.57	0.73	0.55	0.59	1.16	0.67	0.67	2.50	5.10	13.30	0.72
PAT 8-02	8	R1/4	0.43	2.52	2.26	0.57	0.73	0.55	0.59	1.16	0.67	0.67	2.60	5.10	13.50	0.73
PAT 8-03	8	R3/8	0.47	2.56	2.30	0.57	0.73	0.55	0.59	1.16	0.67	0.67	2.78	5.10	13.90	0.75
PAT 8-04	8	R1/2	0.59	2.76	2.44	0.57	0.73	0.55	0.59	1.16	0.67	0.87	3.59	5.10	14.00	0.76
PAT 10-02	10	R1/4	0.43	2.97	2.74	0.69	0.81	0.67	0.71	1.34	0.87	0.87	4.49	6.50	21.30	1.15
PAT 10-03	10	R3/8	0.47	3.01	2.76	0.69	0.81	0.67	0.71	1.34	0.87	0.87	4.72	6.50	21.30	1.15
PAT 10-04	10	R1/2	0.59	3.13	2.81	0.69	0.81	0.67	0.71	1.34	0.87	0.87	5.00	6.50	22.00	1.19
PAT 12-02	12	R1/4	0.43	3.46	3.23	0.83	0.92	0.79	0.83	1.48	1.06	1.06	7.30	7.70	43.10	2.34
PAT 12-03	12	R3/8	0.47	3.50	3.25	0.83	0.92	0.79	0.83	1.48	1.06	1.06	7.57	7.70	44.80	2.43
PAT 12-04	12	R1/2	0.59	3.62	3.31	0.83	0.92	0.79	0.83	1.48	1.06	1.06	7.81	7.70	45.80	2.48
PAT 1/4-01	1/4	R1/8	0.31	2.24	2.09	0.49	0.67	0.47	0.55	1.04	0.55	0.55	1.74	4.60	7.00	0.38
PAT 1/4-02	1/4	R1/4	0.43	2.36	2.13	0.49	0.67	0.47	0.55	1.04	0.55	0.55	1.85	4.60	7.20	0.39
PAT 1/4-03	1/4	R3/8	0.47	2.44	2.18	0.49	0.67	0.47	0.55	1.04	0.55	0.67	2.20	4.60	7.10	0.38
PAT 5/16-02	5/16	R1/4	0.43	2.52	2.24	0.57	0.73	0.55	0.59	1.16	0.67	0.67	2.60	5.10	13.50	0.73
PAT 5/16-03	5/16	R3/8	0.47	2.56	2.26	0.57	0.73	0.55	0.59	1.16	0.67	0.67	2.78	5.10	13.90	0.75
PAT 5/16-04	5/16	R1/2	0.59	2.76	2.30	0.57	0.73	0.55	0.59	1.16	0.67	0.87	3.59	5.10	14.00	0.76
PAT 3/8-02	3/8	R1/4	0.43	2.97	2.74	0.69	0.81	0.67	0.71	1.34	0.87	0.87	4.54	6.50	20.50	1.11
PAT 3/8-03	3/8	R3/8	0.47	3.01	2.76	0.69	0.81	0.67	0.71	1.34	0.87	0.87	4.72	6.50	20.80	1.13
PAT 3/8-04	3/8	R1/2	0.59	3.13	2.81	0.69	0.81	0.67	0.71	1.34	0.87	0.87	5.00	6.50	20.90	1.13
PAT 5/32-N1U																
PAT 5/32-N2U																
PAT 1/4-N1U																
PAT 1/4-N2U																
PAT 1/4-N3U																
PAT 5/16-N2U																
PAT 5/16-N3U																
PAT 5/16-N4U																
PAT 3/8-N2U																
PAT 3/8-N3U																
PAT 3/8-N4U																

PZA

Cross A

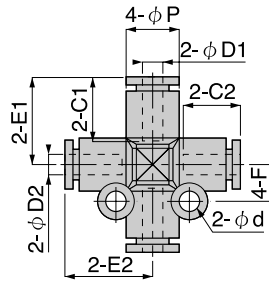


Unit : inch

Model	Tube dia. φD(mm)	φP	C	E	φd	F	Weight (OZ)	Orifice φMM	Eff.a. mm2	CV
PZA 8	8	0.59	0.73	0.73	0.14	0.35	0.70	7.00	17.50	0.95
PZA 10	10	0.69	0.81	0.87	0.17	0.43	1.10	9.00	29.30	1.59
PZA 12	12	0.83	0.92	1.00	0.17	0.47	1.60	11.00	43.60	2.36
PZA 5/16	5/16	0.59	0.73	0.73	0.14	0.35	0.70	7.00	17.50	0.95
PZA 3/8	3/8	0.69	0.81	0.87	0.17	0.43	1.10	9.00	22.80	1.24
PZA 1/2	1/2	0.83	0.92	0.92	0.17	0.47	1.50	11.00	46.30	2.51

PZB

Cross B

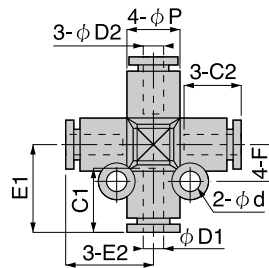


Unit : inch

Model	Tube dia. φD1(mm)	Tube dia. φD2(mm)	φP	C1	C2	E1	E2	φd	F	Weight (OZ)	Orifice φMM	Eff.a. mm2	CV
PZB 8-6	8	6	0.59	0.73	0.67	0.93	0.93	0.14	0.36	0.67	5.00	10.60	0.57
PZB 10-8	10	8	0.69	0.81	0.73	1.09	1.07	0.17	0.44	1.02	7.00	19.30	1.05
PZB 12-10	12	10	0.83	0.92	0.81	1.23	1.23	0.17	0.48	1.57	9.00	30.80	1.67
PZB 5/16-1/4	5/16	1/4	0.59	0.73	0.67	0.93	0.93	0.14	0.36	0.67	5.00	13.50	0.73
PZB 3/8-5/16	3/8	5/16	0.69	0.81	0.73	1.09	1.07	0.17	0.44	1.04	7.00	19.00	1.03
PZB 1/2-3/8	1/2	3/8	0.83	0.92	0.81	1.23	1.23	0.17	0.48	1.55	9.00	27.10	1.47

PZC

Cross C

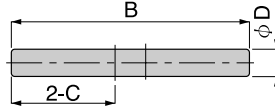


Unit : inch

Model	Tube dia. φD1(mm)	Tube dia. φD2(mm)	φP	C1	C2	E1	E2	φd	F	Weight (OZ)	Orifice φMM	Eff.a. mm2	CV
PZC 8-6	8	6	0.59	0.73	0.67	0.92	0.92	0.14	0.35	0.65	5.00	9.00	0.49
PZC 10-8	10	8	0.69	0.81	0.73	1.08	1.06	0.17	0.43	0.97	7.00	17.40	0.94
PZC 12-10	12	10	0.83	0.92	0.81	1.22	1.22	0.17	0.47	1.55	9.00	29.30	1.59
PZC 5/16-1/4	5/16	1/4	0.59	0.73	0.67	0.92	0.92	0.14	0.35	0.65	5.00	12.00	0.65
PZC 3/8-5/16	3/8	5/16	0.69	0.81	0.73	1.08	1.06	0.17	0.43	0.99	7.00	18.20	0.99
PZC 1/2-3/8	1/2	3/8	0.83	0.92	0.81	1.22	1.22	0.17	0.47	1.55	9.00	17.40	0.94

PIJ

Nipple



Unit : inch



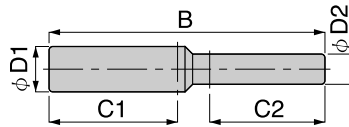
Model	Tube dia. φD(mm)	B	C	Weight (OZ)	Orifice φMM	Eff.a. mm2	CV
PIJ 4	4	1.38	0.59	0.02	2.50	4.20	0.23
PIJ 6	6	1.50	0.67	0.02	4.00	11.20	0.61
PIJ 8	8	1.63	0.71	0.04	6.00	24.20	1.31
PIJ 10	10	1.81	0.79	0.05	7.50	37.10	2.01
PIJ 12	12	2.09	0.92	0.11	9.00	56.00	3.04
PIJ 16	16	2.18	0.94	0.14	11.00	113.7	6.16

Unit : inch

Model	Tube dia. φD	B	C	Weight (OZ)	Orifice φMM	Eff.a. mm2	CV
PIJ 5/32	5/32	1.38	0.59	0.01	2.50	4.20	0.23
PIJ 3/16	3/16	1.50	0.67	0.01	3.00	6.10	0.33
PIJ 1/4	1/4	1.50	0.67	0.02	4.50	11.20	0.61
PIJ 5/16	5/16	1.63	0.71	0.03	6.00	24.20	1.31
PIJ 3/8	3/8	1.81	0.79	0.05	6.90	31.60	1.71
PIJ 1/2	1/2	2.09	0.93	0.10	9.50	56.00	3.04

PIG

Different Diam. Nipple



Unit : inch

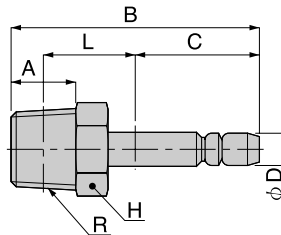
Model	Tube dia. φD(mm)	Tube dia. φD(mm)	B	C1	C2	Weight (OZ)	Orifice φMM	Eff.a. mm2	CV
PIG 6-4	6	4	1.44	0.67	0.59	0.02	2.50	4.20	0.23
PIG 8-6	8	6	1.59	0.71	0.67	0.04	4.00	11.20	0.61
PIG 10-8	10	8	1.73	0.79	0.71	0.05	6.00	19.00	1.03
PIG 12-10	12	10	1.95	0.92	0.79	0.07	7.50	39.70	2.15
PIG 16-12	6	12	2.15	0.94	0.92	0.16	9.00	47.50	2.57

Unit : inch

Model	Tube dia. φD1	Tube dia. φD2	B	C1	C2	Weight (OZ)	Orifice φMM	Eff.a. mm2	CV
PIG 3/16-5/32	3/16	5/32	1.44	0.67	0.59	0.01	2.50	4.40	0.24
PIG 1/4-5/32	1/4	5/32	1.44	0.67	0.59	0.02	2.50	4.20	0.23
PIG 1/4-3/16	1/4	3/16	1.50	0.67	0.67	0.02	2.50	4.60	0.25
PIG 5/16-1/4	5/16	1/4	1.59	0.71	0.67	0.03	4.00	11.20	0.61
PIG 3/8-5/16	3/8	5/16	1.73	0.79	0.71	0.04	6.00	24.10	1.31
PIG 1/2-3/8	1/2	3/8	1.95	0.93	0.79	0.08	7.10	33.80	1.83

PTJ

PT Jack

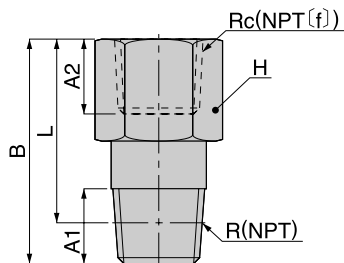


Unit : inch

Model	Tube dia. φD(mm)	R	A	B	L	C	H	Weight (OZ)	Orifice φMM	Eff.a. mm2	CV
PTJ 4-M5	4	M5	0.14	1.08	0.94	0.59	0.31	0.14	1.80	2.20	0.12
PTJ 4-01	4	R1/8	0.31	1.20	1.04	0.59	0.39	0.28	2.20	3.80	0.21
PTJ 6-M5	6	M5	0.14	1.22	1.08	0.67	0.31	0.28	1.80	2.20	0.12
PTJ 6-01	6	R1/8	0.31	1.28	1.12	0.67	0.39	0.30	4.00	11.10	0.60
PTJ 6-02	6	R1/4	0.43	1.44	1.20	0.67	0.55	0.67	4.00	11.10	0.60
PTJ 8-01	8	R1/8	0.31	1.34	1.18	0.71	0.39	0.42	6.00	17.80	0.96
PTJ 8-02	8	R1/4	0.43	1.46	1.22	0.71	0.55	0.63	6.00	23.10	1.25
PTJ 8-03	8	R3/8	0.47	1.54	1.28	0.71	0.67	1.11	6.00	24.20	1.31
PTJ 10-03	10	R3/8	0.47	1.63	1.38	0.79	0.67	1.07	8.00	43.10	2.34

PF

Extension Joint Bush



Unit : inch

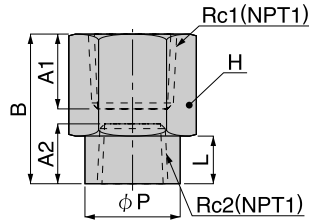
Model	R	RC	A1	A2	B	L	H	Weight (OZ)	Orifice φMM	Eff.a. mm2	CV
PF M5-M5	M5	M5	0.14	0.20	0.77	0.63	0.31	0.18	1.80	2.20	0.12
PF M5-M5L	M5	M5	0.14	0.20	0.91	0.77	0.31	0.23	1.80	2.20	0.12
PF M5-01	M5	R1/8	0.31	0.14	0.57	0.41	0.55	0.39	1.80	2.40	0.13
PF 01-M5	R1/8	M5	0.31	0.24	0.47	0.31	0.39	0.21	4.20	12.00	0.65
PF 01-01	R1/8	R1/8	0.31	0.31	1.12	0.39	0.55	0.60	6.00	22.00	1.19
PF 01-02	R1/8	R1/4	0.43	0.31	0.83	0.59	0.67	0.67	6.00	24.10	1.31
PF 01-03	R1/8	R3/8	0.47	0.31	0.87	0.61	0.83	0.99	6.00	23.90	1.30
PF 02-M5	R1/4	M5	0.43	0.24	0.63	0.39	0.55	0.56	4.20	11.90	0.64
PF 02-01	R1/4	R1/8	0.43	0.31	0.75	0.51	0.55	0.58	4.60	24.10	1.31
PF 02-02	R1/4	R1/4	0.43	0.43	1.30	1.06	0.67	1.11	8.00	44.70	2.42
PF 02-03	R1/4	R3/8	0.47	0.43	0.98	0.73	0.83	1.11	8.00	46.70	2.53
PF 02-04	R1/4	R1/2	0.59	0.43	1.18	0.87	0.94	1.50	8.00	46.50	2.52
PF 03-01	R3/8	R1/8	0.47	0.31	0.69	0.43	0.67	0.88	6.00	25.30	1.37
PF 03-02	R3/8	R1/4	0.47	0.43	0.89	0.65	0.67	0.93	8.00	43.00	2.33
PF 03-03	R3/8	R3/8	0.47	0.47	1.46	1.20	0.83	1.90	10.00	68.10	3.69
PF 03-04	R3/8	R1/2	0.59	0.47	1.22	0.91	0.94	1.67	10.00	67.50	3.66
PF 04-04	R1/2	R1/2	0.59	0.59	1.69	1.38	0.94	2.99	11.00	80.90	4.38

Unit : inch

Model	NPT	NPT(f)	A1	A2	B	L	H	Weight (OZ)	Orifice φMM	Eff.a. mm2	CV
PF U10-U10U	10-32UNF	10-32UNF	0.14	0.14	0.77	0.63	5/16	0.18	1.80	2.20	0.12
PF U10-N1U	10-32UNF	1/8	0.14	0.31	0.57	0.43	9/16	0.37	1.80	2.40	0.13
PF N1-U10U	1/8	10-32UNF	0.31	0.14	0.47	0.31	7/16	0.23	4.20	12.00	0.65
PF N1-N1U	1/8	1/8	0.31	0.31	1.12	0.96	9/16	0.60	6.00	22.00	1.19
PF N1-N2U	1/8	1/4	0.31	0.43	0.83	0.59	11/16	0.68	6.00	24.10	1.31
PF N1-N3U	1/8	3/8	0.31	0.47	0.87	0.71	7/8	1.10	6.00	23.90	1.30
PF N2-U10U	1/4	10-32UNF	0.43	0.14	0.63	0.49	9/16	0.58	4.20	11.90	0.64
PF N2-N1U	1/4	1/8	0.43	0.31	0.75	0.51	9/16	0.58	4.60	24.10	1.31
PF N2-N2U	1/4	1/4	0.43	0.47	1.30	1.06	11/16	1.15	8.00	44.70	2.42
PF N2-N3U	1/4	3/8	0.43	0.47	0.98	0.75	7/8	1.22	8.00	46.70	2.53
PF N2-N4U	1/4	1/2	0.43	0.59	1.18	0.94	1.00	1.66	8.00	46.50	2.52
PF N3-N1U	3/8	1/8	0.47	0.31	0.69	0.43	11/16	0.87	6.00	25.30	1.37
PF N3-N2U	3/8	1/4	0.47	0.43	0.89	0.63	11/16	0.94	8.00	43.00	2.33
PF N3-N3U	3/8	3/8	0.47	0.47	1.46	1.20	7/8	1.99	10.00	68.10	3.69
PF N3-N4U	3/8	1/2	0.47	0.59	1.22	0.96	1.00	1.82	10.00	67.50	3.66
PF N4-N4U	1/2	1/2	0.59	0.59	1.69	1.38	1.00	3.28	11.00	80.90	4.38

PPF

Different Diam. Socket



Unit : inch

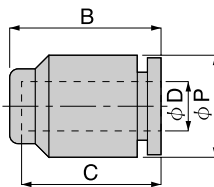
Model	RC1	RC2	A1	A2	B	H	Weight (OZ)	Orifice φMM	Eff.a. mm2	CV
PPF 01-M5	R1/8	M5	0.31	0.20	0.67	0.55	0.40	3.00	5.30	0.29
PPF 02-01	R1/4	R1/8	0.43	0.31	0.83	0.67	0.79	6.50	22.10	1.20
PPF 03-01	R3/8	R1/8	0.47	0.31	0.87	0.83	1.11	6.50	28.80	1.56
PPF 03-02	R3/8	R1/4	0.47	0.43	0.98	0.83	1.25	9.00	37.70	2.04
PPF 04-02	R1/2	R1/4	0.59	0.43	1.18	0.94	1.81	9.00	50.80	2.75
PPF 04-03	R1/2	R3/8	0.59	0.47	1.30	0.94	2.08	12.00	89.80	4.87

Unit : inch

Model	NPT1	NPT2	A1	A2	B	H	Weight (OZ)	Orifice φMM	Eff.a. mm2	CV
PPF N1-U10U	1/8	10-32UNF	0.31	0.14	0.67	9/16	0.41	3.00	5.30	0.29
PPF N2-N1U	1/4	1/8	0.43	0.31	0.83	11/16	0.78	6.50	22.10	1.20
PPF N3-N1U	3/8	1/8	0.47	0.31	0.87	7/8	1.20	6.50	28.80	1.56
PPF N3-N2U	1/4	1/4	0.47	0.43	0.98	7/8	1.34	9.00	37.70	2.04
PPF N4-N2U	1/2	1/4	0.59	0.43	1.18	1.00	2.06	9.00	50.80	2.75
PPF N4-N3U	1/2	3/8	0.59	0.47	1.30	1.00	2.33	12.00	89.80	4.87

PPF

Cap

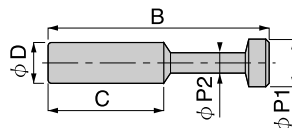


Unit : inch

Model	Tube dia. φD(mm)	B	φP1	C	Weight (OZ)
PPF 4	4	0.65	0.39	0.59	0.10
PPF 6	6	0.73	0.51	0.67	0.10
PPF 8	8	0.79	0.59	0.71	0.20
PPF 10	10	0.89	0.71	0.81	0.30
PPF 12	12	0.98	0.85	0.91	0.40
PPF 1/4	1/4	0.75	0.51	0.67	0.10
PPF 5/16	5/16	0.79	0.59	0.71	0.20
PPF 3/8	3/8	0.89	0.71	0.79	0.30
PPF 5/32	5/32	0.65	0.65	0.59	0.08
PPF 3/16	3/16	0.73	0.73	0.67	0.12
PPF 1/2	1/2	0.91	0.91	0.93	0.37
PPF 1/8	1/8	0.56	0.39	0.43	0.05

PP

Plug

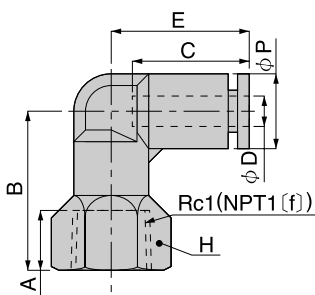


Unit : inch

Model	Tube dia. ϕ D(mm)	B	Φ P1	Φ P2	C	Weight (OZ)
PP 4	4	1.10	0.20	0.12	0.59	0.02
PP 6	6	1.30	0.28	0.12	0.67	0.02
PP 8	8	1.46	0.35	0.16	0.71	0.04
PP 10	10	1.65	0.43	0.20	0.81	0.07
PP 12	12	1.73	0.51	0.24	0.91	0.09
PP 16	16	1.81	0.67	0.31	0.94	0.14
PP 1/4	1/4	1.30	0.30	0.12	0.67	0.02
PP 5/16	5/16	1.46	0.35	0.16	0.71	0.04
PP 3/8	3/8	1.65	0.41	0.20	0.79	0.05
PP 5/32	5/32	1.10	0.20	0.12	0.59	0.01
PP 3/16	3/16	1.30	0.28	0.12	0.67	0.01
PP 1/2	1/2	1.73	0.51	0.24	0.91	0.10

PLF

Female Elbow



Unit : inch

Model	Tube dia. ϕ D(mm)	RC	A	B	Φ P	C	E	H	Weight (OZ)	Orifice ϕ MM	Eff.a. mm2	CV
PLF 4-M5	4	M5	0.20	0.75	0.39	0.59	0.67	0.39	0.33	3.00	3.70	0.20
PLF 4-M6	4	M6	0.24	0.77	0.39	0.59	0.67	0.39	0.33	3.00	3.50	0.19
PLF 4-01	4	RC1/8	0.31	0.89	0.39	0.59	0.67	0.55	0.51	3.00	3.50	0.19
PLF 4-02	4	RC1/4	0.43	1.00	0.39	0.59	0.67	0.67	0.74	3.00	3.50	0.19
PLF 6-M5	6	M5	0.20	0.73	0.49	0.65	0.77	0.47	0.44	4.00	5.50	0.30
PLF 6-M6	6	M6	0.24	0.75	0.49	0.65	0.77	0.47	0.44	4.00	6.40	0.35
PLF 6-01	6	RC1/8	0.31	0.87	0.49	0.65	0.77	0.55	0.55	4.60	10.10	0.55
PLF 6-02	6	RC1/4	0.43	0.98	0.49	0.65	0.77	0.67	0.77	4.60	10.10	0.55
PLF 6-03	6	RC3/8	0.47	1.02	0.49	0.65	0.77	0.83	1.07	4.60	10.00	0.54
PLF 8-01	8	RC1/8	0.31	0.98	0.57	0.71	0.89	0.55	1.67	6.00	17.60	0.95
PLF 8-02	8	RC1/4	0.43	1.10	0.57	0.71	0.89	0.67	0.88	6.00	17.70	0.96
PLF 8-03	8	RC3/8	0.47	1.14	0.57	0.71	0.89	0.83	1.07	6.00	18.10	0.98
PLF 10-02	10	RC1/4	0.43	1.26	0.69	0.81	1.02	0.75	1.36	8.00	22.70	1.23
PLF 10-03	10	RC3/8	0.47	1.30	0.69	0.81	1.02	0.83	1.44	8.00	30.00	1.63
PLF 10-04	10	RC1/2	0.59	1.46	0.69	0.81	1.02	0.94	1.81	8.00	30.60	1.66

Unit : inch

Model	Tube dia. ϕ D	NPT(F)	A	B	Φ P	C	E	H	Weight (OZ)	Orifice ϕ MM	Eff.a. mm2	CV
PLF 5/32-U10U	5/32	10-32UNF	0.14	0.75	0.39	0.59	0.67	7/16	0.32	1.80	3.70	0.20
PLF 5/32-N1U	5/32	1/8	0.31	0.89	0.39	0.59	0.73	9/16	0.49	2.80	3.50	0.19
PLF 5/32-N2U	5/32	1/4	0.43	1.00	0.39	0.59	0.73	11/16	0.73	2.80	3.50	0.19
PLF 1/4-U10U	1/4	10-32UNF	0.14	0.73	0.49	0.67	0.77	1/2	0.45	1.80	5.50	0.30
PLF 1/4-N1U	1/4	1/8	0.31	0.87	0.49	0.67	0.79	9/16	0.54	4.60	10.10	0.55
PLF 1/4-N2U	1/4	1/4	0.43	0.98	0.49	0.67	0.79	11/16	0.80	4.60	10.10	0.55
PLF 1/4-N3U	1/4	3/8	0.47	1.20	0.49	0.67	0.79	7/8	1.20	4.60	10.00	0.54
PLF 5/16-N1U	5/16	1/8	0.31	0.98	0.57	0.71	0.91	9/16	0.66	6.00	17.60	0.95
PLF 5/16-N2U	5/16	1/4	0.43	1.01	0.57	0.71	0.91	11/16	0.92	6.00	17.70	0.96
PLF 5/16-N3U	5/16	3/8	0.47	1.14	0.57	0.71	0.91	7/8	1.27	6.00	18.10	0.98
PLF 3/8-N2U	3/8	1/4	0.43	1.26	0.69	0.79	1.04	3/4	1.38	8.00	28.04	1.52
PLF 3/8-N3U	3/8	3/8	0.47	1.30	0.69	0.79	1.04	7/8	1.57	8.00	28.97	1.57
PLF 3/8-N4U	3/8	1/2	0.59	1.46	0.69	0.79	1.04	1	2.14	8.00	27.12	1.47